

TM 5-4120-274-35P

DEPARTMENT OF THE ARMY TECHNICAL MANUAL

DIRECT SUPPORT, GENERAL SUPPORT AND
DEPOT MAINTENANCE REPAIR PARTS AND
SPECIAL TOOLS LIST

AIR CONDITIONING UNITS, ELECTRIC MOTOR DRIVEN;
9,000 BTU/HR, VERTICAL COMPACT, 115 VOLT,
SINGLE PHASE, 50/60 CYCLE (THERM-AIR MANU-
FACTURING CO. MODEL CV-9-1-15-60) FSN 4120-935-1609;
9,000 BTU/HR, VERTICAL COMPACT, 230 VOLT,
SINGLE PHASE, 50/60 CYCLE (THERM-AIR MANU-
FACTURING CO. MODEL CV-9-1-30-60) FSN 4120-935-1612;
9,000 BTU/HR, VERTICAL COMPACT, 208 VOLT, 3
PHASE, 400 CYCLE (THERM-AIR MANUFACTURING CO.
MODEL CV-9-3-08-400) FSN 4120-935-1610; 9,000 BTU/HR,
VERTICAL COMPACT, 208 VOLT, 3 PHASE, 50/60 CYCLE
(THERM-AIR MANUFACTURING CO. MODEL CV-9-3-08-60)
FSN 4120-935-1611

This copy is a reprint which includes current
pages from Change 1.

HEADQUARTERS, DEPARTMENT OF THE ARMY

FEBRUARY 1970

CHANGE
No. 1



HEADQUARTERS
DEPARTMENT OF THE ARMY
WASHINGTON, DC, 14 August 1974

**Direct Support, General Support and Depot
Maintenance Repair Parts and Special Tools List
for
AIR CONDITIONING UNITS, ELECTRIC MOTOR DRIVEN;
9,000 BTU/HR, VERTICAL COMPACT, 115 VOLT, SINGLE
PHASE, 50/60 HERTZ (THERM-AIR MANUFACTURING
CO. MODEL CV-9-1-15-60) FSN 4120-935-1609;
9,000 BTU/HR, VERTICAL COMPACT, 230 VOLT,
SINGLE PHASE, 50/60 HERTZ (THERM-AIR
MANUFACTURING CO. MODEL CV-9-1-30-60)
FSN 4120-935-1612; 9,000 BTU/HR, VERTICAL COMPACT,
208 VOLT, 3 PHASE, 400 HERTZ (THERM-AIR
MANUFACTURING CO. MODEL CV-9-3-08-400)
FSN 4120-935-1610; 9,000 BTU/HR, VERTICAL
COMPACT, 208 VOLT, 3 PHASE, 50/60 HERTZ
(THERM-AIR MANUFACTURING CO. MODEL
CV-9-3-08-60) FSN 4120-935-1611**

Current as of 19 June 1974

TM 5-4120-274-35P, 4 February 1970, is changed as follows:

The title is changed as shown above.

General. All additions, deletions or changes to Federal Stock Numbers (FSN's), Part Numbers (P/N's) and Manufacturer's Codes must be reflected in Section IV of this manual.

Page 5. Paragraph 8 is superseded as follows:

8. Recommendations for Maintenance Publications Improvements. You can help to improve this manual by calling attention to errors and by recommending improvements. Your letter or DA Form 2028 (Recommended Changes to Publications and Blank Forms) should be mailed direct to: Commander, US Army Troop Support Command, ATTN: AMSTS-MPP, 4300 Goodfellow Boulevard, St. Louis, MO 63120. A reply will be furnished direct to you.

Page 17. In line item 14, change FSN in column (2) to read: "5945-549-6348"; change description in column (3) to read: "RELAY, Heater and Compressor, MS24192D1 (96906)"; change column (5) to read: "2".

In line item 16, change P/N and manufacturer's code in column (3) to read: "C1- 13475 (95970)".

Page 18. After line item 11, add line item 11.1 as follows: in column (1) add: "PO"; in column (3) add: "RELAY, Time Delay, 13214E0752-3 (97403)"; in column (4) add: "EA"; in column (5) add: "1"; in column (8) add: "5"; in column (9) add: "3".

After line item 11.1 add line item 11.2 as follows: in column (1) add: "PO"; in column (3) add: "RELAY". Time Delay, 13214E0752-4 (97403) A and B"; in column (4) add: "EA"; in column (5) add: "1"; in column (8) add: "5"; in column (9) add: "3".

Page 18. In line items 12 and 13, change column(1) to read: "X2F".

In line item 14, change column (1) to read: "X2F"; add FSN to column (2) as follows: "4130-107-3905".

Page 25. In Group 14, line item 7, change FSN in column (2) to read: "4130-758-6654".

Page 27. In line item 9, add FSN to column (2) as follows: "4820-112-0047".

Page 30. In line item 6, change FSN in column (2) to read: "4820-109-3505".

By Order of the Secretary of the Army:

CREIGHTON W. ABRAMS
General, United States Army
Chief of Staff

Official:

VERNE L. BOWERS

Major General, United States Army
The Adjutant General

Distribution:

To be distributed in accordance with DA Form 12-25C (qty rqr block No. 535) direct and general support maintenance requirements for Air Conditioners, 9,000 BTU.

TECHNICAL MANUAL

NO. 5-4120-274-35P

HEADQUARTERS
DEPARTMENT OF THE ARMY
WASHINGTON, D.C., 4 February 1970

DIRECT SUPPORT, GENERAL SUPPORT AND DEPOT MAINTENANCE REPAIR
PARTS AND SPECIAL TOOLS LIST

FOR

AIR CONDITIONING UNITS, ELECTRIC MOTOR DRIVEN; 9,000 BTU/HR, VERTICAL COMPACT, 115 VOLT, SINGLE PHASE, 50/60 CYCLE (THERM-AIR MANUFACTURING CO. MODEL CV-9-1-15-60) FSN 4120-935-1609; 9,000 BTU/HR, VERTICAL COMPACT, 230 VOLT, SINGLE PHASE, 50/60 CYCLE (THERM-AIR MANUFACTURING CO. MODEL CV-9-1-30-60) FSN 4120-935-1612; 9,000 BTU/HR, VERTICAL COMPACT, 208 VOLT, 3 PHASE, 400 CYCLE (THERM-AIR MANUFACTURING CO. MODEL CV-9-3-08-400) FSN 4120-935-1610; 9,000 BTU/HR, VERTICAL COMPACT, 208 VOLT, 3 PHASE, 50/60 CYCLE (THERM-AIR MANUFACTURING CO. MODEL CV-9-3-08-60) FSN 4120-935-1611

Current as of 30 September 1969

TABLE OF CONTENTS

	Page	Illus Figure
SECTION I. INTRODUCTION	1	
SECTION II. REPAIR PARTS LIST	6	
Group 01. Casing Assembly	6	1
02. Centrifugal Fan and Inlet Ring	9	2
03. Axial Fan and Baffle	10	3
04. Electric Motor and Mounting	10	4
05. Heating System	12	5
06. Control Panel Assembly and Block Off Assembly.	13	6
07. Pressure Switches	15	7
08. Relay Assemblies	15	8
09. Junction Box Assembly	16	9, 10
10. Capacitors	21	11
11. Solenoid Valves	22	12
12. Drain Hoses	22	13
13. Electrical Wiring Harnesses	23	14

	Page	Illus Figure
14. Compressor and Mounting	25	15
15. Evaporator and Condenser Coils and Mounting	26	16
16. Refrigerant Piping	26	17
SECTION III. SPECIAL TOOLS, TEST AND SUPPORT EQUIPMENT FOR DS, GS, AND DEPOT MAINTENANCE (Not Applicable)		
SECTION IV. INDEX - FEDERAL STOCK NUMBER AND REFERENCE NUMBER CROSS-REFERENCE TO FIGURE AND ITEM NUMBER	50	

Section I. INTRODUCTION

1. Scope.

This manual lists repair parts, special tools, test and support equipment required for the performance of direct support, general support, and depot maintenance of the Air Conditioning Units.

2. General.

This Repair Parts and Special Tools List is divided into the following sections:

a. Repair Parts - Section II. A list of repair parts authorized for the performance of maintenance at the direct support, general support, and depot level in figure and item number sequence.

b. Special Tools, Test and Support Equipment - Section III. Not applicable.

c. Federal Stock Number and Reference Number Index - Section IV. A list of Federal stock numbers in ascending numerical sequence followed by a list of reference numbers in ascending alpha-numeric sequence, cross-referenced to the illustration figure number and item number.

Note: Items not illustrated are cross-referenced to group number.

3. Explanation of Columns.

The following provides an explanation of columns in the tabular lists in Sections II and III.

a. Source, Maintenance, and Recoverability Codes (SMR).

Note: Common hardware items known to be readily available in Army supply channels are assigned Maintenance codes only. Source codes, Recoverability codes, and Maintenance Allowances are not assigned this category.

(1) Source code, indicates the selection status and source for the listed item. Source codes are:

<i>Code</i>	<i>Explanation</i>
P	Repair parts which are stocked in or supplied from the GSA/DSA, or Army supply system and authorized for use at indicated maintenance categories.
M	Repair parts which are not procured or stocked, but are to be manufactured in indicated maintenance levels.
A	Assemblies which are not procured or stocked as such, but are made up of two or more units. Such component units carry individual stock numbers and descriptions, are procured and stocked separately and can be assembled to form the required assembly at indicated maintenance categories.
X	Parts and assemblies which are not procured or stocked and the mortality of which normally is below that of the end item or component. The failure of such part or assembly should result in retirement of the end item from the supply system.
X1	Repair parts which are not procured or stocked. The requirement for such items will be filled by use of the next higher assembly or component.
X2	Repair parts which are not stocked. The indicated maintenance category requiring such repair parts will attempt to obtain same through cannibalization. Where such repair parts are not obtainable through cannibalization, requirements will be requisitioned, with accompanying justification, through normal supply channels.
G	Major assemblies that are procured with PEMA funds for initial issue only as exchange assemblies at DSU and GSU level. These assemblies will not be stocked above DS and GS level or returned to depot supply level.

(2) Maintenance code, indicates the lowest category of maintenance authorized to install the listed item. The maintenance level codes are:

<i>Code</i>	<i>Explanation</i>
O	Organizational Maintenance
F	Direct Support Maintenance
H	General Support Maintenance
D	Depot Maintenance

(3) Recoverability code, indicates whether unserviceable items should be returned for recovery or salvage. Items not coded are expendable. Recoverability codes are:

<i>Code</i>	<i>Explanation</i>
R	Repair parts and assemblies which are economically repairable at DSU and GSU activities and are normally furnished by supply on an exchange basis.
S	Repair parts and assemblies which are economically repairable at DSU and GSU activities and which normally are furnished by supply on an exchange basis. When items are determined by a GSU to be uneconomically repairable, they will be evacuated to a depot for evaluation and analysis before final disposition.
T	High dollar value recoverable repair parts which are subject to special handling and are issued on an exchange basis. Such repair parts normally are repaired or overhauled at depot maintenance activities.
U	Repair parts specifically selected for salvage by reclamation units because of precious metal content, critical materials, or high dollar value reusable casings or castings.

b Federal Stock Number. This column indicates the Federal stock number assigned to the item and will be used for requisitioning purposes.

c. Description. This column indicates the Federal item name and any additional description of the item required. Assembly components and subassemblies are indented under major assemblies. The abbreviation "w/e" when used as a part of the nomenclature indicates the Federal Stock Number includes all armament, equipment, accessories, and repair parts issued with the item. A part number or other reference number is followed by the applicable five-digit Federal supply code for manufacturers in parenthesis. Repair parts quantities included in kits and sets are shown in front of the repair part name. Material required for manufacture or fabrication is identified.

d. Unit of Measure (UM). A 2 character alphabetic abbreviation indicating the amount or quantity of the item upon which the allowances are based, (e.g., ft, ea, pr, etc.).

e Quantity Incorporated in Unit. This column indicates the quantity of the item used in the assembly group. A "V" appearing in this column in lieu of a quantity indicates that a definite quantity cannot be indicated (e.g., shims, spacers, etc.).

f. 30-Day DS/GS Maintenance Allowances.

Note: Allowances in GS column are for GS maintenance only.

(1) The allowance columns are divided into three subcolumns. Indicated in each subcolumn, opposite the first appearance of each item, is the total quantity of items authorized for the number of equipments supported. Subsequent appearances of the same item will have the letters "REF" in the applicable allowance column. To locate the referenced item, locate the FSN or reference number in the index. The earliest figure and item number is the referenced item. Items authorized for use as required but not for initial stockage are identified with an asterisk in the allowance column.

(2) The quantitative allowances for DS/GS levels of maintenance will represent initial stockage for a 30-day period for the number of equipment supported.

(3) To determine allowances when supporting more than 100 of these equipments; first, divide the number of equipments supported by 100 by moving the decimal two places left; second, multiply the result by the quantity in the 51-100 density column. Example, authorized allowance for 51-100 equipments is 40; for 150 equipments multiply 40 by 1.50 or 60 parts required.

g. 1-Year Allowances Per 100 Equipments/Contingency Planning Purposes. This column indicates opposite the first appearance of each item the total quantity required for distribution and contingency planning purposes. The range of items indicates total quantities of all authorized items required to provide for adequate support of 100 equipments for one year. Subsequent appearances of the same item will have the letters "REF" in the allowance column. To locate the referenced item, locate the FSN or reference number in the index. The earliest figure and item number is the referenced item.

h. Depot Maintenance Allowance Per 100 Equipments. This column indicates opposite the first appearance of each item the total quantity authorized for depot maintenance of 100 equipments. Subsequent appearances of the same item will have the letters "REF" in the allowance column. To locate the referenced item, locate the FSN or reference number in the index. The earliest figure and item number is the referenced item. Items authorized for use as required but not for initial stockage are identified with an asterisk in the allowance column.

i. Illustration. This column is divided as follows:

(1) *Figure Number.* Indicates the figure number of the illustration in which the item is shown.

(2) *Item Number.* Indicates the callout number used to reference the item in the illustration.

4. Special Information.

a. Identification of the usable on codes included in the description columns of this publication are:

<i>Code</i>	<i>Used on</i>
A	Model CV-9-1-30-60
B	Model CV-9-1-15-60
C	Model CV-9-3-08-400
D	Model CV-9-3-08-60

Note: Repair Parts without usable on codes are applicable to all Models.

b. Repair parts mortality has been based on 7200 hours operation per year.

c. Parts which require manufacture or assembly at a category higher than that authorized for installation will indicate in the source column the higher category.

d. The following publications pertain to the Air Conditioning Units and its components

TM 5-4120-274-15	Operator, Organizational, DS, GS, and Depot Maintenance Manual
TM 5-4120-274-20P	Organizational Maintenance Repair Parts and Special Tool Lists

5. How to Locate Repair Parts.

a. When Federal stock number or reference number is unknown:

(1) *First.* Using the table of contents, determine the assembly group within which the repair part belongs. This is necessary since illustrations are prepared for assembly groups and listings are divided into the same groups.

(2) *Second.* Find the illustration covering the assembly group to which the repair part belongs.

(3) *Third.* Identify the repair part on the illustration and note the illustration figure and item number of the repair part.

(4) *Fourth.* Using the Repair Parts Listing, find the assembly group to which the repair part belongs and locate the illustration figure and item number noted on the illustration.

b. When Federal stock number or reference number is known:

(1) *First.* Using the Index of Federal Stock Numbers and Reference Numbers find the pertinent Federal stock number or reference number. This index is in ascending FSN sequence, cross-referenced to the illustration figure number and item number.

(2) *Second.* Using the Repair Parts Listing, find the assembly group of the repair part and illustration figure number and item number referenced in the Index of Federal Stock Numbers and Reference Numbers.

c. When the Federal stock number or reference number is known and the repair part is not illustrated:

(1) *First.* Using the Index of Federal Stock Numbers and Reference Numbers find the pertinent Federal stock number or reference number in the section titled Items not Illustrated and note the group number. This section of the index is in ascending FSN sequence followed by a list of reference numbers in alpha-numeric sequence, cross-referenced to assembly group number.

(2) *Second.* Using the table of contents, locate the assembly group number and page number.

(3) *Third.* Using the applicable group number and page number, locate the pertinent stock number or reference number in the Repair Parts Listing. Items which are not illustrated are listed at the end of the assembly group to which they belong.

6. Abbreviations.

<i>Abbreviation</i>	<i>Explanation</i>
Amp	Ampere
Assy	Assembly
Cu	Copper
Elec	Electric
I.D.	Identification
Instr	Instrument
Ovld	Overload
Press	Pressure
VAC	Volts alternating current

7 Federal Supply Codes for Manufacturers.

<i>Code</i>	<i>Manufacturer</i>
01479	Whirlpool Corp. 225 W. Morgan Ave Evansville, Ind. 47710
02289	Hi-G Inc. Spring St. and Route 75 Windsor Locks, Conn. 06096
04009	Arrow-Hart & Hegeman Electric Co. 163 Hawthorne St. Hartford Conn. 06106
06534	Therm-Air Mfg. Co. Inc. 630 Loucks Mill Rd. P.O. Box 1867 York, Pa. 17405
07707	United Shoe Machinery Corp. Fastener Division 510 River Rd. Shelton, Conn. 06485
09214	General Electric Co. Semi-Conductor Products Dept. West Genesee St. Auburn, N.Y. 31022
15605	Cutler-Hammer Inc. Milwaukee, Wis.
17465	Cutler-Hammer Inc. Belmont, Calif.
21394	Florida Transformer Co. Spring Gallen Ranch Road P.O. Box 518 Deleon Springs Fla. 32028
58553	Superior Valve Co. 2200 N. Main St. Washington, Pa. 15301
58849	Syntron Co. Homer City, Pa.
64731	Ward Furniture Mfg. Co. Inc. 1201 N. 1st St. Fort Smith, Ark. 72901
70255	Alto Controls Corp. P.O. Box 12700 St. Louis, Mo. 63141
71400	Busmann Mfg. Division of McGraw-Edison Co. 2536 W. University St. St. Louis, Mo. 63017
74193	Heinemann Electric Co. 2612 Brunswick Pike Trenton, N.J. 08602
75382	Kulka Electric Corp. 520 S. Fulton Ave Mt. Vernon, N.Y. 10550
78462	Sporlan Valve Co. 7525 Sussex St. Louis, Mo. 63143
78553	Tinnerman Products Inc. 8700 Brook Park Rd Cleveland, Ohio 44129
82647	Metal and Control Inc. Control Products Group 34 Forest St. Attleboro, Mass. 02703
82866	Research Products Corp. 1015 E. Washington Ave. Madison, Wis. 53701
86797	Rogan Bros. Inc. 8031 N. Monticello Skokie, Ill. 60076

<i>Code</i>	<i>Manufacturer</i>	<i>Code</i>	<i>Manufacturer</i>
91494	Controls Co. of America Heating and Air Conditioning Division 2450 E. 32nd Street Milwaukee, Wis. 53245	96906	Military Standards Promulgated by Standardization Division Directorate of Logistic Services D.S.A.
91929	Honeywell Inc. Freeport, Ill.	97403	Army Engineer Research and Development Laboratones Fort Belvoir, Va.
92578	Penn Control Inc. 240 E. Willow Ave Wheaton, Ill. 60188	8. Recommendations for Maintenance Publication Improvements.	
93781	Jacks-Evans Manufacturing Co. 4427 Geraldine Ave. St. Louis. Mo. 63115	Report of errors, omissions, and recommendations for improving this publication by the individual user is encouraged. Reports should be submitted on DA Form 2028 (Recommended Changes to DA Publications) and forwarded direct to Commanding General, U.S. Army Mobility Equipment Command, ATTN: AMSME-MPP, 4300 Goodfellow Boulevard, St. Louis, Missouri 63120.	
93790	Cornell-Dubilier Electronics Division Federal Pacific Electric Corp. 1605 Rodney French Blvd. New Bedford, Mass. 02741		
95970	Milwaukee Transformer Co. 5231 N Hopkins Milwaukee Wis. 53209		
95920	Tramer Gilbert Co. 1217 Main St. Cleveland, Ohio 44113		

SECTION II. REPAIR PARTS LIST

(1)	(2)	(3)	(4)	(5)	(6) 30-DAY DS MAINT ALLOWANCE			(7) 30-DAY GS MAINT ALLOWANCE			(8)	(9)	(10)		
SMR CODE	FEDERAL STOCK NUMBER	DESCRIPTION REF NUMBER & MFR CODE	USABLE ON CODE	UNIT OF MEAS	QTY INC IN UNIT	(A)	(B)	(C)	(A)	(B)	(C)	1-YR ALW PER 100 EQUIP CNTGY	DEPOT MAINT ALW PER 100 EQUIP	FIG NO	ILLUS- TRATION (A) (B) ITEM NO
		GROUP 01. CASING ASSEMBLY													
X20		PLATE I D AIR CONDITIONER C44558-101 (06534)	A	EA	1									1	1
X20		PLATE I.D. AIR CONDITIONER C44555-101 (06534)	B	EA	1									1	1
X20		PLATE I. D. AIR CONDITIONER C44557-101 (06534)	C	EA	1									1	1
X20		PLATE I. D. AIR CONDITIONER C44556-101 (96906)	D	EA	1									1	1
X20		PLATE FAN ROTATION 13214E8216 (97403)		EA	1									1	2
X20		PLATE, INSTR, CHARGE INFORMATION 13214E3662 (97403)		EA	1									1	3
O	5305-984-6195	SCREW, GRILLE ATTACHING MS35206-247 (96906)		EA	4									1	4
O		WASHER, GRILLE ATTACHING 13214E3469 (97403)		EA	4									1	5
X20		GRILLE, EVAPORATOR AIR DISCHARGE 13214E3712 (97403)		EA	1									1	6
O	5305-958-0340	SCREW, GRILLE ATTACHING MS35207-247 (96906)		EA	4									1	7
O		WASHER, GRILLE ATTACHING 13214E3469 (97403)		EA	4									1	8
X20		GRILLE, AIR RETURN 13214E3713 (97403)		EA	1									1	9
P O	4130-103-3732	SOUND ATTENUATOR ALTERNATE FOR GRILLE P/N 13214E3712 AND 13214E3713 13214E3640 (97403)		EA	1	*	*	*	*	*	*	5	3	1	9
X20	4935-085-9004	PENDANT 13-P (06534)		EA	1									1	10
P O	4132-106-5657	CHAIN ASSY 13211E8322 (97403)		EA	1	*	*	*	*	*	*	5	3	1	11
X20		SPRING MS24596C48 (96906)		EA	1									1	12
P O	4130-107-3735	FILTER X5387 (82866)		EA	1	2	2	3	2	2	3	35	26	1	13

(1) SMR CODE	(2) FEDERAL STOCK NUMBER	(3) DESCRIPTION REF NUMBER & MFR CODE	USABLE ON CODE	(4) UNIT OF MEAS	(5) QTY INC IN UNIT	(6) 30-DAY DS MAINT ALLOWANCE			(7) 30-DAY GS MAINT ALLOWANCE			(8) 1-YR ALW PER 100 EQUIP CNTGY	(9) DEPOT MAINT ALW PER 100 EQUIP	(10) ILLUS- TRATION	
						(A)	(B)	(C)	(A)	(B)	(C)	FIG NO	ITEM NO		
X20		RETAINER, FILTER 13214E3636 (97403)		EA	1	1-20	21-50	51-100	1-20	21-50	51-100			1	14
O		SCREW, COVER ATTACHING MS35206-246 (96906)			12									1	15
O		WASHER, COVER ATTACHING 13214E3460 (97403)			12									1	16
X20		COVER, AIR CONDITIONER 13214E3703 (97403)			1									1	17
O		FASTENER, COVER 13214E3647 (96906)			2									1	18
O		SCREW, TOP PANEL ATTACHING MS35206-246 (96906)		EA	16									1	19
O		WASHER, TOP PANEL ATTACHING 13214E3469 (97403)		EA	16									1	20
X20		PANEL, TOP 13214E3384 (97403)		EA	1									1	21
O		SCREW, LOWER PANEL ATTACHING MS9122-07 (96906)			2									1	22
O		WASHER, LOWER PANEL ATTACHING MS27183-8 (96906)			4									1	23
X20		PANEL, FRONT ACCESS D44526-1 (06294)	A	EA	1									1	24
X20		PANEL, FRONT ACCESS 13214E3761-2 (97403)	B	EA	1									1	24
X20		PANEL, FRONT ACCESS 13214E3761-3 (97403)	C	EA	1									1	24
X20	4120-935-1611	PANEL, FRONT ACCESS 13214E3761-4 (97403)	D	EA	1									1	24
X20		ELECTRIC SCHEMATIC D44527-101 (06534)	A	EA	1									1	25
X20		ELECTRIC SCHEMATIC 13214E3448 (96906)	B	EA	1									1	25
X20		ELECTRIC SCHEMATIC 13214E3594 (97403)	C	EA	1									1	25
X20		ELECTRIC SCHEMATIC 13214E3748 (97403)	D	EA	1									1	25
O	5310-088-0551	NUT, COVER ATTACHING 21044N04 (96906)			12									1	26

(1) SMR CODE	(2) FEDERAL STOCK NUMBER	(3) DESCRIPTION REF NUMBER & MFR CODE	USABLE ON CODE	(4) UNIT OF MEAS	(5) QTY INC IN UNIT	(6) 30-DAY DS MAINT ALLOWANCE			(7) 30-DAY GS MAINT ALLOWANCE			(8) 1-YR ALW PER 100 EQUIP CNTGY	(9) DEPOT MAINT ALW PER 100 EQUIP	(10) ILLUS- TRATION	
						(A)	(B)	(C)	(A)	(B)	(C)	FIG NO	(A)	(B) ITEM NO	
O	5305-053-1112	SCREW, COVER ATTACHING MS24621-9 (96906)		EA	12	1-20	21-50	51-100	1-20	21-50	51-100			1	27
X20		COVER 13214E3471-1 (97403)		EA	3									1	28
O	5310-088-0551	NUT, COVER ATTACHING 21044N04 (96906)			4									1	29
O		SCREW, COVER ATTACHING MS24621-18 (96906)			4									1	30
X20		COVER 13214E3471-2 (97403)		EA	1									1	31
O	5305-984-6194	SCREW, INTAKE ATTACHING MS35206-246 (96906)		EA	5									1	32
O	5310-045-3299	WASHER, INTAKE ATTACHING MS35338-42 (96906)		EA	5									1	33
O		WASHER, INTAKE ATTACHING 13214E3469 (97403)		EA	5									1	34
X20		FRESH AIR INTAKE 13214E3616 (97403)		EA	1									1	35
O	5305-984-6195	SCREW, COVER ATTACHING MS35206-247 (96906)		EA	5									1	36
O	5310-045-3299	WASHER, COVER ATTACHING MS35338-42 (96906)		EA	5									1	37
O		WASHER, COVER ATTACHING 13214E3469 (97403)		EA	5									1	38
X20		PLATE, CBR COVER 13214E3615 (97403)		EA	1									1	39
O	5305-984-6195	SCREW, GRILLE ATTACHING MS35206-247 (96906)		EA	8									1	40
O		WASHER, GRILLE ATTACHING MS27183-7 (96906)		EA	8									1	41
O		WASHER, GRILLE ATTACHING 13214E3469 (97403)		EA	8									1	42
X20		DISCHARGE GRILLE CONDENSER AIR C44519-1 (06534)		EA	1									1	43
O	5305-984-6211	SCREW, GRILLE ATTACHING MS35206-264 (96906)		EA	8									1	44
O		WASHER, GRILLE ATTACHING 13214E3469 (97403)		EA	8									1	45
X20		INTAKE GRILLE, CONDENSER AIR C44518-1 (06290)		EA	1									1	46

(1) SMR CODE	(2) FEDERAL STOCK NUMBER	(3) DESCRIPTION REF NUMBER & MFR CODE	USABLE ON CODE	(4) UNIT OF MEAS	(5) QTY INC IN UNIT	(6) 30-DAY DS MAINT ALLOWANCE			(7) 30-DAY GS MAINT ALLOWANCE			(8) 1-YR ALW PER 100 EQUIP CNTGY	(9) DEPOT MAINT ALW PER 100 EQUIP	(10) ILLUS- TRATION	
						(A)	(B)	(C)	(A)	(B)	(C)	FIG NO	(A)	(B) ITEM NO	
X20	5935-577-0091	CAP, DUST MS25043-20C (96906)		EA	1	1-20	21-50	51-100	1-20	21-50	51-100			1	4
O		PIPE PLUG 13211E3178 (97403)		EA	4									1	48
O	5305-068-0505	SCREW, BOTTOM PANEL ATTACHING MS20726-5 (96906)		EA	10									1	49
O	5310-809-4058	WASHER, BOTTOM PANEL ATTACHING MS27183-10 (96906)		EA	10									1	50
X20		PANEL, BOTTOM 13214E3386 (97403)			1									1	51
X20		GROMMET 13211E8222 (97403)		EA	1									1	52
X20		CASING 13214E3635 (97403)		EA	1									1	53
		GROUP 02 CENTRIFUGAL FAN AND INLET RING													
O	5305-985-6194	SCREW, RING ATTACHING MS35206-246 (96906)		EA	6									2	1
O	5310-045-3299	WASHER, RING ATTACHING MS35338-42 (96906)		EA	6									2	2
O	5310-809-8544	WASHER, RING ATTACHING MS27183-7 (96906)		EA	6									2	3
X20		INLET RING 13214E3792 (97403)		EA	1									2	4
X20		FAN, CENTRIFUGAL D44508-101 (06534)		EA	1									2	5
O		SETSCREW, HUB ATTACHING MS51021-62 (96906)			2									2	6
X20		COLLAR, HUB ATTACHING 13214E3408 (97403)			4									2	7
O		BOLT, HUB ATTACHING 13214E3407 (97403)			4									2	8
X20		HUB, FAN AA335-T62 (06534)			1									2	9
X20		FAN 13214E3558 (97403)			1									2	10

(1) SMR CODE	(2) FEDERAL STOCK NUMBER	(3) DESCRIPTION REF NUMBER & MFR CODE	(4) USABLE ON CODE	(5) UNIT OF MEAS	QTY	(6) 30-DAY DS MAINT ALLOWANCE			(7) 30-DAY GS MAINT ALLOWANCE			(8) 1-YR ALW PER 100 EQUIP CNTGY	(9) DEPOT MAINT ALW PER 100 EQUIP	(10) ILLUS- TRATION	
						(A)	(B)	(C)	(A)	(B)	(C)	FIG NO	(A)	(B) ITEM NO	
		GROUP 03. AXIAL FAN AND BAFFLE				1-20	21-50	51-100	1-20	21-50	51-100				
X20		FAN AXIAL D44508-101 (06534)		EA	1									3	1
O		SETSCREW, FAN ATTACHING MS51021-62 (96906)			2									3	2
O	5305-984-6194	SCREW, BAFFLE ATTACHING MS35206-246 (96906)		EA	4									3	3
O	5310-045-3299	WASHER, BAFFLE ATTACHING MS35338-42 (96906)		EA	1									3	4
O	5310-809-8544	WASHER, BAFFLE ATTACHING MS27183-7 (96906)		EA	4									3	5
X20		BAFFLE, FAN 13214E3623 (97403)		EA	1									3	6
O	5305-012-2138	SCREW, BRACKET ATTACHING MS35291-61 (96906)			4									3	7
X20		BRACKET, FAN C44544-1 (96906)		EA	2									3	8
		GROUP 04 ELECTRIC MOTOR AND MOUNTING													
O	5306-013-0696	BOLT, MOTOR ATTACHING			2									4	1
O	5310-012-0214	WASHER, LOCK, MOTOR ATTACHING			2									4	2
O	5310-227-6566	WASHER, FLAT, MOTOR ATTACHING			2									4	3
O		SPACER, MOTOR ATTACHING			2									4	4
O	5310-543-2628	NUT, MOTOR ATTACHING			4									4	5
O	5310-227-6566	WASHER, MOTOR ATTACHING			4									4	6
O	5305-018-6929	BOLT, MOTOR ATTACHING			4									4	7
O	5315-730-4577	KEY, SHAFT TO FAN MS20066-147 (96906)		EA	1									4	8
O	5315-730-4564	KEY, SHAFT TO FAN MS20066-143 (96906)		EA	1									4	9

(1) SMR CODE	(2) FEDERAL STOCK NUMBER	(3) DESCRIPTION REF NUMBER & MFR CODE	(4) USABLE ON CODE	(5) UNIT OF MEAS	(6) 30-DAY DS MAINT ALLOWANCE			(7) 30-DAY GS MAINT ALLOWANCE			(8)	(9)	(10) ILLUS- TRATION		
					(A)	(B)	(C)	(A)	(B)	(C)	1-YR ALW PER 100 EQUIP CNTGY	DEPOT ALW PER 100 EQUIP	(A)	(B)	
P O R	6105-936-2130	MOTOR, SINGLE-PHASE, 50/60- CYCLE, 230-VAC 4730-9 (64731)	A	EA	1	*	2	2	*	2	2	21	16	4	10
P O R		MOTOR, SINGLE-PHASE, 50/60- CYCLE, 115-VAC 4730-18 (64731)	B	EA	1	*	2	2	*	2	2	21	16	4	10
P O R	6105-103-2167	MOTOR, FAN, THREE-PHASE 400 CYCLE 208-VAC 4720-16 (64731)	C	EA	1	*	2	2	*	2	2	21	16	4	10
P O R	6105-103-4515	MOTOR, THREE-PHASE 60- CYCLE 208-VAC 4720-17 (64731)	D	EA	1	*	2	2	*	2	2	21	16	4	10
O	5305-018-6929	SCREW, END BELL ATTACHING			4									4	11
X1		END BELL MOTOR 02-009350-000 (64731)		EA	1									4	12
P F	3110-144-8755	BEARING, FRONT 01-005248-084 (64731)		EA	1	4	4	8	4	4	8	84	72	4	13
P F	3110-144-8755	BEARING, REAR 01-005248-084 (64731)		EA	1	REF	REF	REF	REF	REF	REF	REF	REF	4	14
X1		ROTOR AND SHAFT 02-010541-002 (64731)	A	EA	1									4	15
X1		ROTOR SHAFT 02-010542-002 (64731)	B,C	EA	1									4	15
X1		ROTOR SHAFT 02-010540-002 (64731)	D		1									4	15
O	5305-013-1830	SCREW, CONNECTOR ATTACHING			4									4	16
X20		CONNECTOR 02-009685-010 (64731)	A,B	EA	1									4	17
O		SCREW, TERMINAL BOX ATTACHING MS24621-9 (96906)			4									4	18
X20		TERMINAL BOX 02-0009685-010 (64731)	A,B	EA	1									4	19
P F		OVLD PROTECTOR 01-008773-020 (64731)	A,B	EA	1	*	2	2	*	2	2	21	16	4	20
X1		FRAME, MOTOR 02-010541-001 (64731)		EA	1									4	21
X20		BRACKET, MOTOR ATTACHING 13214E3625 (97403)		EA	1									4	22

(1) SMR CODE	(2) FEDERAL STOCK NUMBER	(3) DESCRIPTION REF NUMBER & MFR CODE	(4) USABLE ON CODE	(5) UNIT OF MEAS	(6) 30-DAY DS MAINT ALLOWANCE			(7) 30-DAY GS MAINT ALLOWANCE			(8) 1-YR ALW PER 100 EQUIP CNTGY	(9) DEPOT MAINT ALW PER 100 EQUIP	(10) ILLUS- TRATION (A) (B)		
					(A)	(B)	(C)	(A)	(B)	(C)	FIG NO	ITEM NO			
		GROUP 05. HEATING SYSTEM													
O		RETAINING CLAMP ELEMENT 13211E3416 (97403)		EA	6								5	1	
P O	4540-112-0219	HEATING ELEMENT 13214E3698-2 (97403)	A,C,D	EA	6	4	9	18	4	9	18	210	144	5	2
P O	4540-110-9666	HEATING ELEMENT 13214E3698-1 (97403)	B	EA	6	4	9	18	4	9	18	210	144	5	2
O	5310-060-2039	NUT, THERMOSTAT ATTACHING MS21044D08 (96906)		EA	2									5	3
O		WASHER, THERMOSTAT ATTACHING MS27183-7 (96906)		EA	2									5	4
O		SCREW, THERMOSTAT ATTACHING 13211E8337 (96906)			2									5	5
X20		THERMOSTAT 13211E8180 (96906)	A,B		1									5	6
P F	4130-106-5148	WIRING HARNESS 13214E3506 (97403)	C,D	EA	1	*	*	*	*	*	*	5	3	5	7
X20		THERMOSTAT 13211E8180 (96906)	C,D		1									5	8
X20		GASKET, THERMOSTAT 13211E8273 (96906)			1									5	9
O		NUT, SUPPORT ATTACHING MS21044DE (96906)		EA	4									5	10
O		WASHER, SUPPORT ATTACHING MS27183-8 (96906)		EA	4									5	11
O		SCREW, SUPPORT ATTACHING MS35207-264 (96906)		EA	4									5	12
O	5305-087-0259	SCREW, SUPPORT ATTACHING MS9122-05 (96906)		EA	2									5	13
X20		SUPPORT 13214E3629-1 (97403)		EA	1									5	14
X20	4130-056-4593	CLIP,ELEMENT SUPPORT 20744-017-495 (96906)		EA	6									5	15

(1) SMR CODE	(2) FEDERAL STOCK NUMBER	(3) DESCRIPTION REF NUMBER & MFR CODE	USABLE ON CODE	(4) UNIT OF MEAS	(5) QTY INC IN UNIT	(6) 30-DAY DS MAINT ALLOWANCE			(7) 30-DAY GS MAINT ALLOWANCE			(8) 1-YR ALW PER 100 EQUIP CNTGY	(9) DEPOT MAINT ALW PER 100 EQUIP	(10) ILLUS- TRATION	
						(A)	(B)	(C)	(A)	(B)	(C)	FIG NO	(A)	(B) ITEM NO	
		GROUP 06 CONTROL PANEL ASSEMBLY AND BLOCKOFF ASSEMBLY				1-20	21-50	51-100	1-20	21-50	51-100				
O	5310-889-2549	NUT, CONTROL PANEL ATTACHING MS21045-08 (96906)		EA	1									6	1
O	5305-984-6193	SCREW, CONTROL PANEL ATTACHING MS35206-245 (96906)		EA	1									6	2
X20		CONTROL PANEL ASSEMBLY 13214E3725-3 (97403)	A,B	EA	1									6	3
X20		CONTROL PANEL ASSEMBLY 13214E3725-2 (97403)	C,D	EA	1									6	3
O	5305-989-7434	SCREW, CLAMP ATTACHING MS35207-263 (96906)		EA	1									6	4
X20		CLAMP, THERMOSTAT BULB HOLDDOWN MS21919-A6 (96906)		EA	1									6	5
O	5305-024-7217	SETSCREW, KNOB ATTACHING			2									6	6
P O		KNOB, THERMOSTAT RB175 (86797)		EA	2	*	*	*	*	*	*	5	3	6	7
O	5310-889-2549	NUT, PANEL ATTACHING MS21045-08 (96906)		EA	4									6	8
O	5305-984-6194	SCREW, PANEL ATTACHING MS35206-246 (96906)		EA	4									6	9
X20		PANEL, CONTROL PANEL COVER 13214E3359 (97403)		EA	1									6	10
O		NUT, THERMOSTAT ATTACHING MS21045-05 (96906)		EA	1									6	11
O	5305-984-6193	SCREW, THERMOSTAT ATTACHING MS35206-245 (96906)		EA	1									6	12
P O	5600-107-1147	THERMOSTAT CS5797 (92578)		EA	1	2	2	3	2	2	3	35	26	6	13
O	5305-024-7217	SET SCREW KNOB ATTACHING			2									6	14
P O		KNOB SWITCH RB-700 (86797)		EA	1	*	*	*	*	*	*	5	3	6	15

(1) SMR CODE	(2) FEDERAL STOCK NUMBER	(3) DESCRIPTION REF NUMBER & MFR CODE	(4) USABLE ON CODE	(5) UNIT OF MEAS	(6) 30-DAY DS MAINT ALLOWANCE			(7) 30-DAY GS MAINT ALLOWANCE			(8)	(9)	(10) ILLUS- TRATION		
					(A)	(B)	(C)	(A)	(B)	(C)	1-YR ALW PER 100 EQUIP CNTGY	DEPOT MAINT ALW PER 100 EQUIP	(A)	(B)	
P O		SWITCH, ROTARY VENTILATE, HEAT, COOL 8912K216 (17465)		EA	1	*	2	2	*	2	2	21	16	6	16
P O	5930-655-1514	SWITCH, FAN 511TS1-2 (91929)		EA	1	2	2	3	2	2	3	2	3	6	17
O	5310-061-7326	NUT MS21045-3 (96906)		EA	1									6	18
O		WASHER MS35338-43 (96906)		EA	2									6	19
O		WASHER MS29183-9 (96906)		EA	1									6	20
O	5310-042-6903	NUT MS35650-102 (96906)		EA	1									6	21
O	5310-584-7800	WASHER MS15795-708 (96906)		EA	2									6	22
O	5305-993-1851	SCREW, GROUND MS35207-267 (96906)		EA	1									6	23
O		SCREW, WIRING HARNESS ATTACHING MS24621-9 (96906)			4									6	24
P F	4130-107-3731	WIRING HARNESS 13214E3769 (97403)	A	EA	1	*	*	*	*	*	*	5	3	6	25
P F		WIRING HARNESS 13214E3462 (97403)	B	EA	1	*	*	*	*	*	*	5		6	25
P F	4130-106-5652	WIRING HARNESS 13214E3511 (97403)	C,D	EA	1	*	*	*	*	*	*	5	3	6	25
X1		RECEPTACLE 13211E8399	A		1									6	26
X1		RECEPTACLE 13211E8399C28-17P (97403)	B	EA	1									6	26
X1		RECEPTACLE 13211E8399C28-11P (97403)	C,D	EA	1									6	26
X20		CONTROL PANEL 13214E3379 (97403)		EA	1									6	27
X20		BLOCKOFF ASSEMBLY 13214E3665 (97403)		EA	1										
X1		BLOCKOFF 13214E3689 (97403)		EA	1										
O	5310-081-8087	NUT, COVER ATTACHING MS21044N06 (96906)		EA	8										
O	5305-056-9945	SCREW, COVER ATTACHING MS24621-18 (96906)		EA	8										

(1) SMR CODE	(2) FEDERAL STOCK NUMBER	(3) DESCRIPTION REF NUMBER & MFR CODE	USABLE ON CODE	(4) UNIT OF MEAS	(5) QTY INC IN UNIT	(6) 30-DAY DS MAINT ALLOWANCE			(7) 30-DAY GS MAINT ALLOWANCE			(8) 1-YR ALW PER 100 EQUIP CNTGY	(9) DEPOT ALW PER 100 EQUIP	(10) ILLUS- TRATION (A) (B)		
						(A)	(B)	(C)	(A)	(B)	(C)	FIG NO	ITEM NO			
X20		COVER 13214E3471-2 (97403)		EA	1											
O	5305-053-1114	SCREW, COVER ATTACHING MS24621-11 (96906)		EA	4											
X20	4130-991-8260	RETAINING RING COVER ATTACHING C6974-20-41 (78553)		EA	1											
X20		COVER 13214E3471-1 (96906)		EA	1											
O	5305-934-4992	GROUP 07 PRESSURE SWITCHES SCREW, SWITCH ENCLOSURE ATTACHING MS35206-232 (96906)		EA	4										7	1
X20		PLATE INFORM, PRESSURE SWITCH B44564-101 (06534)		EA	1										7	2
P O	5930-275-7800	HI-PRESS SWITCH 210AP40AN (92578)		EA	1	*	2	2	*	2	2	21	16	7	3	
P O		LO-PRESS SWITCH 210AP10AN (92578)		EA	1	*	2	2	*	2	2	21	16	7	4	
O		BUSHING 13211E8416 (96906)			1									7	5	
X20		ENCLOSURE PRESSURE SWITCH 13214E3578 (97403)		EA	1									7	6	
O		GROUP 08 RELAY ASSEMBLIES NUT, RELAY ATTACHING MS21044N3 (96906)	A,B		2									8	1	
O		NUT, RELAY ATTACHING MS21044N3 (96906)	C,D		4									8	1	
O		SCREW, RELAY ATTACHING MS35207-263 (96906)	A,B		2									8	2	
O		SCREW, RELAY ATTACHING MS35207-263 (96906)	C,D		4									8	2	
P O		RELAY MTS-004(96906)	A,B		1	4	4	6	4	4	6	70	52	8	3	

(1) SMR CODE	(2) FEDERAL STOCK NUMBER	(3) DESCRIPTION REF NUMBER & MFR CODE	USABLE ON CODE	(4) UNIT OF MEAS	(5) QTY INC IN UNIT	(6) 30-DAY DS MAINT ALLOWANCE			(7) 30-DAY GS MAINT ALLOWANCE			(8) 1-YR ALW PER 100 EQUIP CNTGY	(9) DEPOT MAINT ALW PER 100 EQUIP	(10) ILLUS- TRATION	
						(A)	(B)	(C)	(A)	(B)	(C)	FIG NO	ITEM NO		
P O	5945-106-7100	RELAY MTS-004-9 (04009)	C	EA	2	2	2	3	2	2	3	35	26	8	3
P O		RELAY MTS-004 (04009)	D	EA	2	REF	REF	REF	REF	REF	REF	REF	REF	8	3
P O	5961-978-7660	DIODE SURGE PROTECTOR 1N1695 (09214)	C,D	EA	1	*	2	2	*	2	2	21		8	4
		GROUP 09 JUNCTION BOX ASSEMBLY													
O		SCREW, JUNCTION BOX ATTACHING 13214E374001 (96906)			4									9	1
O		WASHER, JUNCTION BOX ATTACHING 13211E8337 (96906)			4									9	2
X20		JUNCTION BOX ASSY 13214E3705 (97403)	A	EA	1									9	3
X20		JUNCTION BOX ASSY 13214E3497-2 (97403)	B	EA	1									9	3
X20		JUNCTION BOX ASSY 13214E3498-2 (97403)	C	EA	1									9	3
X20		JUNCTION BOX ASSY 13214E3498-3 (97403)	D	EA	1									9	3
O		SCREW, COVER ATTACHING 13214E3744V1 (97403)		EA	4									9	4
O		WASHER, COVER ATTACHING 13211E8337 (97403)		EA	1									9	5
O		NUT, COVER ATTACHING 13214E3523-3 (97403)		EA	4									9	6
X20		COVER, JUNCTION BOX 13214E3412 (97403)		EA	1									9	7
P O		RECTIFIER ERF212B1 (58849)		EA	1	*	*	*	*	*	*	5	3	9	8
P O		FUSE, 2 AMP, 250 VOLT F09A250V2A (71400)		EA	2	3	6	12	3	6	12	140	126	9	9
O	5310-081-8087	NUT, FUSEHOLDER ATTACHING MS21044N06 (96906)		EA	2									9	10
O		SCREW, FUSEHOLDER ATTACHING MS35190-237 (96906)		EA	2									9	11

(1) SMR CODE	(2) FEDERAL STOCK NUMBER	(3) DESCRIPTION REF NUMBER & MFR CODE	USABLE ON CODE	(4) UNIT OF MEAS	(5) QTY INC IN UNIT	(6) 30-DAY DS MAINT ALLOWANCE			(7) 30-DAY GS MAINT ALLOWANCE			(8) 1-YR ALW PER 100 EQUIP CNTGY	(9) DEPOT MAINT ALW PER 100 EQUIP	(10) ILLUS- TRATION	
						(A)	(B)	(C)	(A)	(B)	(C)	FIG NO	ITEM NO		
X20		FUSEHOLDER 4525 (71400)		EA	1									9	12
P O	5920-939-5442	FUSE KAW5 (96906)		EA	1	3	6	12	3	6	12	140	115	9	13
O	5310-081-8087	NUT, FUSEHOLDER ATTACHING MS21044N06 (96906)		EA	2									9	14
O	5305-059-4552	SCREW, FUSEHOLDER ATTACHING MS35190-237 (96906)		EA	2									9	15
X20	5920-240-4066	FUSEHOLDER 4515 (71400)		EA	1									9	16
O	5310-081-8087	NUT, TERMINAL BOARD ATTACHING MS21044N06 (96906)		EA	2									9	17
O	5305-984-4992	SCREW, TERMINAL BOARD ATTACHING MS35206-232 (96906)		EA	2									9	18
X20		TERMINAL BOARD 699JJ6F (75382)		EA	1									9	19
O		NUT, TERMINAL BOARD ATTACHING MS21044-120 (96906)		EA	4									9	20
O	5305-993-1851	SCREW, TERMINAL BOARD ATTACHING MS35207-267 (96906)		EA	4									9	21
X20		TERMINAL BOARD 39TB8 (75382)		EA	1									9	22
O		NUT, RELAY ATTACHING MS21004N3 (96906)		EA	8									9	23
O		SCREW RELAY ATTACHING MS35202-263 (96906)		EA	1									9	24
P O	5945-230-7726	RELAY 9565H10 (15605)		EA	1	2	2	3	2	2	3	35	26	9	25
O	5310-081-8087	NUT MS21044N06 (96906)		EA	4									9	26
P O	5950-112-3438	TRANSFORMER TP019303 (21394)	A	EA	1	*	2	2	*	2	2	21	16	9	27
P O		TRANSFORMER C1-13473 (21394)	B	EA	1	*	2	2	*	2	2	21	16	9	27
P O		TRANSFORMER C1-14415 (95970)	C	EA	1	*	2	2	*	2	2	21	16	9	27
P O		TRANSFORMER C1-13474 (95970)	D	EA	1	*	2	2	*	2	2	21	16	9	27

(1) SMR CODE	(2) FEDERAL STOCK NUMBER	(3) DESCRIPTION REF NUMBER & MFR CODE	USABLE ON CODE	(4) UNIT OF MEAS	(5) QTY INC IN UNIT	(6) 30-DAY DS MAINT ALLOWANCE			(7) 30-DAY GS MAINT ALLOWANCE			(8) 1-YR ALW PER 100 EQUIP CNTGY	(9) DEPOT MAINT ALW PER 100 EQUIP	(10) ILLUS- TRATION (A) (B)	
						(A)	(B)	(C)	(A)	(B)	(C)	FIG NO	ITEM NO		
O		SCREW, COVER ATTACHING MS35206-214 (96906)			2									9	28
X20		COVER, CIRCUIT BREAKER HE-1015 (96906)		EA	1									9	29
P O		CIRCUIT BREAKER 21.5-AMP 115-VOLT, 50/60-CYCLE 70-197-3MG6 (74193)	A	EA	1	*	2	2	*	2	2	14	8	9	30
P O	5935-069-1306	CIRCUIT BREAKER 12.5-AMP, 230-VOLT, 50/60-CYCLE 70-197-2MG6 (74193)	B	EA	1	*	2	2	*	2	2	14	9	9	30
P O		CIRCUIT BREAKER, 11.8-AMP, 208-VOLT, 400-CYCLE 71-168-2MG6 (74193)	C	EA	1	*	2	2	*	2	2	14		9	30
P O		CIRCUIT BREAKER 8.5-AMP, 208-VOLT, 50/60- CYCLE 71-161-3MG6 (74193)	D	EA	1	*	2	2	*	2	2	14	9	9	30
O		NUT, RESISTOR ATTACHING MS21049N06 (96906)			2									9	31
O		SCREW, RESISTOR ATTACHING MS35206-229 (96906)			2									9	32
X20		RESISTOR 1715 (06534)			1									9	33
O	5310-088-0551	NUT, WIRING HARNESS ATTACHING MS21044N04 (96906)			2									9	34
O	5305-993-0190	SCREW, WIRING HARNESS ATTACHING MS35206-214 (96906)			2									9	35
P F	4130-107-3731	WIRING HARNESS 13214E3569-3 (97403)	A	EA	1	*	*	*	*	*	*	5	3	9	36
P F		WIRING HARNESS 13214E3569-1 (97403)	B	EA	1	*	*	*	*	*	*	5		9	36
P F		WIRING HARNESS 13214E3569-2 (97403)	C,D	EA	1	*	*	*	*	*	*	5	3	9	36
P F		WIRING HARNESS 13214E3507-1 (97403)	C	EA	1	*	*	*	*	*	*	5	3	9	37
P F		WIRING HARNESS 13214E3507-2 (97403)	D	EA	1	*	*	*	*	*	*	5	3	9	37
P O		PHASE SEQUENCE RELAY 1400-S460 (02289)	C	EA	2	2	2	3	2	2	3	35		9	38
P O		PHASE SEQUENCE RELAY 1400-S461 (02289)	D	EA	1	*	2	2	*	2	2	21	16	9	38

(1) SMR CODE	(2) FEDERAL STOCK NUMBER	(3) DESCRIPTION REF NUMBER & MFR CODE	USABLE ON CODE	(4) UNIT OF MEAS	(5) QTY INC IN UNIT	(6) 30-DAY DS MAINT ALLOWANCE			(7) 30-DAY GS MAINT ALLOWANCE			(8) 1-YR ALW PER 100 EQUIP CNTGY	(9) DEPOT MAINT ALW PER 100 EQUIP	(10) ILLUS- TRATION	
						(A)	(B)	(C)	(A)	(B)	(C)	FIG NO	ITEM NO		
X2O		JUNCTION BOX 13214E3664 (97403)		EA	1									9	39
F		NUT, WIRING HARNESS ATTACHING MS21044N06 (96906)			4									10	1
F		SCREW WIRING HARNESS ATTACHING MS24621-18 (96906)	A,B		4									10	2
F		SCREW WIRING HARNESS ATTACHING MS35206-231 (96906)	C,D		4									10	2
X2F		GASKET MS51007-10 (96906)	A,B		1									10	3
X2F		GASKET MS51007-12 (96906)	C,D		1									10	3
P F	4130-107-3221	WIRING HARNESS 13214E3782 (97403)	A	EA	1	*	*	*	*	*	*	5	3	10	4
P F		WIRING HARNESS 13214E3724 (97403)	B	EA	1	*	*	*	*	*	*	5	3	10	4
P F		WIRING HARNESS 13214E3807 (97403)	C,D	EA	1	*	*	*	*	*	*	5	3	10	4
X1		PLUG MS3102P28-9S (96906)	A	EA	1									10	5
X1		PLUG MS3106R16-10S (96906)	B	EA	1									10	5
X1		PLUG MS3100R16S1P (96906)	C	EA	1									10	5
X1		RECEPTACLE MS3102R32-6P (96906)	D	EA	1									10	5
F		NUT, WIRING HARNESS ATTACHING MS21044N06 (96906)			4									10	6
F		SCREW, WIRING HARNESS ATTACHING MS24621-30 (96906)	A,B		4									10	7
F		SCREW, WIRING HARNESS ATTACHING MS35206-231 (96906)	C,D		4									10	7
X2F		GASKET MS51007-12 (96906)	A,B		1									10	8

(1) SMR CODE	(2) FEDERAL STOCK NUMBER	(3) DESCRIPTION REF NUMBER & MFR CODE	(4) USABLE ON CODE	(5) UNIT OF MEAS	QTY INC IN UNIT	(6) 30-DAY DS MAINT ALLOWANCE			(7) 30-DAY GS MAINT ALLOWANCE			(8) 1-YR ALW PER 100 EQUIP CNTGY	(9) DEPOT ALW PER 100 EQUIP	(10) ILLUS- TRATION	
						(A)	(B)	(C)	(A)	(B)	(C)	FIG NO	ITEM NO		
X2F		GASKET MS51007-10 (96906)	C,D		1									10	8
P F	4130-107-3729	WIRING HARNESS 13214E3768 (97403)	A	EA	1	*	*	*	*	*	*	5	3	10	9
P F		WIRING HARNESS 13214E3461 (97403)	B	EA	1	*	*	*	*	*	*	5		10	9
P F	4130-106-5649	WIRING HARNESS 13214E3588 (97403)	C,D	EA	1	*	*	*	*	*	*	5	3	10	9
X1	5935-726-8317	RECEPTACLE MS3102R32-7P (96906)	A,B	EA	1									10	10
X1	5935-725-7248	RECEPTACLE MS3102R28-12S (96906)	C,D	EA	1									10	10
F		NUT, WIRING HARNESS ATTACHING MS21044N06 (96906)			4									10	11
F		SCREW, WIRING HARNESS ATTACHING MS24621-11 (96906)			4									10	12
X2F		GASKET MS51007-3 (96906)			1									10	13
P F		WIRING HARNESS 13214E-377-1 (97403)	A	EA	1	*	*	*	*	*	*	5	3	10	14
P F		WIRING HARNESS 13214E3771-4 (97403)	B	EA	1	*	*	*	*	*	*	5	3	10	14
P F		WIRING HARNESS 13214E3771-7 (97403)	C,D	EA	1	*	*	*	*	*	*	5	3	10	14
X1		RECEPTACLE MS3102R12S (96906)	A	EA	1									10	15
X1	5935-725-1345	RECEPTACLE MS3102R12S3S (96906)	B,C,D	EA	1									10	15
F		NUT, WIRING HARNESS ATTACHING MS21044N06 (96906)			4									10	16
F		SCREW, WIRING HARNESS ATTACHING MS24621-11 (96906)			4									10	17
X2F		GASKET MS51007-3 (96906)			1									10	18
P F	6150-109-2550	WIRING HARNESS 13214E3771-2 (97403)	A	EA	1	*	*	*	*	*	*	5	3	10	19
P F		WIRING HARNESS 13214E3771-5 (97403)	B	EA	1	*	*	*	*	*	*	5	3	10	19
P F		WIRING HARNESS 13214E3771-8 (97403)	C,D	EA	1	*	*	*	*	*	*	5	3	10	19

(1) SMR CODE	(2) FEDERAL STOCK NUMBER	(3) DESCRIPTION REF NUMBER & MFR CODE	USABLE ON CODE	(4) UNIT OF MEAS	(5) QTY INC IN UNIT	(6) 30-DAY DS MAINT ALLOWANCE			(7) 30-DAY GS MAINT ALLOWANCE			(8) 1-YR ALW PER 100 EQUIP CNTGY	(9) DEPOT MAINT ALW PER 100 EQUIP	(10) ILLUS- TRATION	
						(A)	(B)	(C)	(A)	(B)	(C)	FIG NO	ITEM NO		
X1	5935-165-6183	RECEPTACLE MS3102R12S3SX (96906)		EA	1	1-20	21-50	51-100	1-20	21-50	51-100			10	20
F		NUT, WIRING HARNESS ATTACHING MS21044N06 (96906)			4									10	21
F		SCREW, WIRING HARNESS ATTACHING MS24621-11 (96906)			4									10	22
X2F		GASKET MS51007-3 (96906)			1									10	23
P F		WIRING HARNESS 13214E3771-3 (97403)	A	EA	1	*	*	*	*	*	*	5	3	10	24
P F		WIRING HARNESS 13214E3771-6 (97403)	B	EA	1	*	*	*	*	*	*	5	*	10	24
P F	6150-106-5655	WIRING HARNESS 13214E3771-9 (97403)	C,D	EA	1	*	*	*	*	*	*	5	3	10	24
X1		RECEPTACLE MS3102R12S3SZ (96906)		EA	1									10	25
		GROUP 10. CAPACITORS													
O	5305-984-6194	SCREW, BRACKET ATTACHING MS35206-246 (96906)	A,B	EA	4									11	1
O	5310-060-2039	NUT, STRAP ATTACHING MS21044N08 (96906)	A,B		4									11	2
O		SCREW, STRAP ATTACHING MS35206-246	A,B		4									11	3
X2O		STRAP,CAPACITOR RETAINING 13214E3531 (97403)	A,B	EA	2									11	4
P O		CAPACITOR KBL37P306Q (93790)	A	EA	1	2	2	3	2	2	3	35	26	11	5
P O	5910-903-0665	CAPACITOR KBL37P256Q (93790)	B	EA	1	2	2	3	2	2	3	35	26	11	5
P O		CAPACITORS KBL66P605Q (93790)	A	EA	1	2	2	3	2	2	3	35	26	11	6
P O		CAPACITOR KBL37P126Q-1 (93790)	B	EA	1	2	2	3	2	2	3	35	26	11	6
X2O		BRACKET, CAPACITOR SUPPORT 13214E3527 (97403)	A,B	EA	1									11	7

(1) SMR CODE	(2) FEDERAL STOCK NUMBER	(3) DESCRIPTION REF NUMBER & MFR CODE	(4) USABLE ON CODE	(5) UNIT OF MEAS	(6) 30-DAY DS MAINT ALLOWANCE			(7) 30-DAY GS MAINT ALLOWANCE			(8) 1-YR ALW PER 100 EQUIP CNTGY	(9) DEPOT MAINT ALW PER 100 EQUIP	(10) ILLUS- TRATION (A) (B)		
					(A)	(B)	(C)	(A)	(B)	(C)	FIG NO	ITEM NO			
		GROUP 11. SOLENOID VALVES													
	5305-984-6191	SCREW, SOLENOID VALVE ATTACHING MS35206-243 (96906)		4									12	1	
	5310-045-3299	WASHER, SOLENOID VALVE ATTACHING MS35338-42 (96906)		4									12	2	
P F	4810-109-3830	VALVE, SOLENOID 0158 (93781)		EA	2	2	3	5	2	3	5	65	46	12	3
F		NUT		1										12	4
P F		COIL ASSY 3MP-23 (93781)		EA	1	2	2	5	2	2	5	56		12	5
		GROUP 12. DRAIN HOSES													
O		NUT, CLAMP ATTACHING MS21044D08 (96906)		1										13	1
O		SCREW, CLAMP ATTACHING MS35206-246 (96906)		1										13	2
O		CLAMP MS35842-2 (96906)		1										13	3
O	5315-234-1856	PIN. COTTER, SPRING RETAINING MS24665-155 (96906)		EA	1									13	4
X2O		SPRING 13211E8412 (97403)		EA	1									13	5
X2O		BALL, DRAIN 13211E8411 (97403)		EA	1									13	6
X2F		TUBE 13214E3484 (97403)		FT	1									13	7
X2O	4730-815-9295	CLAMP, DRAIN HOSE ATTACHING MS35842-2 (96906)		EA	2									13	8
P O		DRAIN HOSE 13211E8323 (97403)		EA	1	*	*	*	*	*	*	10	6	13	9
O		NUT, CLAMP ATTACHING MS21044D08 (96906)		1										13	10
O		SCREW, CLAMP ATTACHING MS35206-246 (96906)		1										13	11

(1) SMR CODE	(2) FEDERAL STOCK NUMBER	(3) DESCRIPTION REF NUMBER & MFR CODE	USABLE ON CODE	(4) UNIT OF MEAS	(5) QTY INC IN UNIT	(6) 30-DAY DS MAINT ALLOWANCE			(7) 30-DAY GS MAINT ALLOWANCE			(8) 1-YR ALW PER 100 EQUIP CNTGY	(9) DEPOT MAINT ALW PER 100 EQUIP	(10) ILLUS- TRATION	
						(A)	(B)	(C)	(A)	(B)	(C)	FIG NO	ITEM NO		
O		CLAMP MS35842-2 (96906)		EA	1									13	12
O	5315-234-1856	PIN, COTTER, SPRING RETAINING MS24665-155 (96906)		EA	1									13	13
X2O		SPRING 13211E8412 (97403)		EA	1									13	14
X2O		BALL, DRAIN 13211E8411 (97403)		EA	1									13	15
X2F		TUBE 13214E3486 (97403)		EA	1									13	16
X2O	4730-815-9295	CLAMP, DRAIN HOSE ATTACHING MS35842-2 (96906)		EA	2									13	17
P O		DRAIN HOSE 13211E8323 (97403)		EA	1	REF	REF	REF	REF	REF	REF	REF	REF	13	18
		GROUP 13. ELECTRICAL WIRING HARNESSSES													
P F		WIRING HARNESS 13214E3781 (97403)	A	EA	1	*	*	*	*	*	*	5	3	14	1
P F		WIRING HARNESS 13214E3453 (97403)	B	EA	1	*	*	*	*	*	*	5	3	14	1
P F	4130-106-5647	WIRING HARNESS 13214E3579 (97403)	C, D	EA	1	*	*	*	*	*	*	5	3	14	1
X1	5935-879-0235	PLUG MS3106R28-9P (96906)	A	EA	1									14	2
X1		PLUG MS3106R32-7S (96906)	B	EA	1									14	2
X1	5935-752-2793	PLUG MS3106R28-12P (96906)	C, D	EA	1									14	2
X1	5935-801-6623	RECEPTACLE MS3100R28-11S (96906)	A, C, D	EA	1									14	3
X1	5935-853-1913	RECEPTACLE MS3100R28-17S (96906)		EA	1									14	3
X1		RECEPTACLE MS3100R20-4PY (96906)	A	EA	1									14	4
X1		RECEPTACLE MS3100R20-4PX (96906)		EA	1									14	4

(1) SMR CODE	(2) FEDERAL STOCK NUMBER	(3) DESCRIPTION REF NUMBER & MFR CODE	(4) USABLE ON CODE	(5) UNIT OF MEAS	(6) 30-DAY DS MAINT ALLOWANCE			(7) 30-DAY GS MAINT ALLOWANCE			(8) 1-YR ALW PER 100 EQUIP CNTGY	(9) DEPOT MAINT ALW PER 100 EQUIP	(10) ILLUS- TRATION		
					(A)	(B)	(C)	(A)	(B)	(C)	FIG NO	ITEM NO			
X1	5935-721-0488	PLUG MS3106R14S6S (96906)	A,B	EA	1								14	5	
X20		ADAPTER B44535-101 (06534)	C,D	EA	1								14	5	
O	5305-995-3442	SCREW, CLAMP ATTACHING MS35207-268 (96906)		EA	2								14	6	
O	5310-043-2226	WASHER, CLAMP ATTACHING MS35338-24 (96906)		EA	2								14	7	
X20	5340-531-9168	CLAMP MS21919DG9 (96906)		EA	2								14	8	
X20		SPACER 13211E8376-1 (97403)			2								14	9	
P F		WIRING HARNESS 13214E3774 (97403)	A	EA	1	*	*	*	*	*	*	5		14	10
P F	4130-107-3743	WIRING HARNESS 13214E3723 (97403)	B	EA	1	*	*	*	*	*	*	5	3	14	10
P F	4130-107-3744	WIRING HARNESS 13214E3806 (97403)	C,D	EA	1	*	*	*	*	*	*	5	3	14	10
X1	5935-879-0235	PLUG MS3106R28-9P (96906)	A,B	EA	1									14	11
X1	5935-847-6124	PLUG MS3106R32-6S (96906)	C,D	EA	1									14	11
X1		PLUG MS3106R20-15S (96906)		EA	1									14	12
X1	5935-755-3493	PLUG MS3106R16-10S (96906)	A,B	EA	1									14	13
X1		PLUG MS3106R16S1SW (96906)	C,D	EA	1									14	13
X1	5935-928-7865	RECEPTACLE MS3100R20-4P (96906)	C,D	EA	1									14	14
PF		WIRING ASSEMBLY 13214E3754 (97403)			1	*	*	*	*	*	*	10	6	14	15
X1		PLUG MS3106R12S3P (96906)			1									14	16
PF		WIRING ASSEMBLY 13214E3754 (97403)			1	REF	REF	REF	REF	REF	REF	REF	REF	14	17
X1		PLUG MS3106R12S3P (96906)			1									14	18
P F	4130-110-3776	WIRING HARNESS 13214E3516-3 (97403)	A	EA	1	*	*	*	*	*	*	5	3	14	19
P F		WIRING HARNESS 13214E3516-2 (97403)	B	EA	1	*	*	*	*	*	*	5	3	14	19

(1) SMR CODE	(2) FEDERAL STOCK NUMBER	(3) DESCRIPTION REF NUMBER & MFR CODE	USABLE ON CODE	(4) UNIT OF MEAS	(5) QTY INC IN UNIT	(6) 30-DAY DS MAINT ALLOWANCE			(7) 30-DAY GS MAINT ALLOWANCE			(8) 1-YR ALW PER 100 EQUIP CNTGY	(9) DEPOT ALW PER 100 EQUIP	(10) ILLUS- TRATION	
						(A)	(B)	(C)	(A)	(B)	(C)	FIG NO	(A)	(B) ITEM NO	
P F		WIRING HARNESS 13214E3516-1 (97403)	C,D	EA	1	*	*	*	*	*	*	5	3	14	19
X1	5935-879-0022	PLUG MS3106R12S3PX (96906)		EA	1									14	20
O		SCREW, WIRING HARNESS ATTACHING MS35202-219 (96906)		EA	4									14	21
P F		WIRING HARNESS 13214E3457-2 (97403)	A	EA	1	*	*	*	*	*	*	5	3	14	22
P F		WIRING HARNESS 13214E3457-1 (97403)	B	EA	1	*	*	*	*	*	*	5	3	14	22
P F		WIRING HARNESS 13214E3587 (97403)	C,D	EA	1	*	*	*	*	*	*	5	3	14	22
X1	5935-081-1233	RECEPTACLE MS3100R16-10P (96906)	A,B	EA	1									14	23
X1	5935-811-5856	PLUG MS3100R16S1P (96906)	C,D	EA	1									14	23
		GROUP 14. COMPRESSOR AND MOUNTING													
F	5310-984-3806	NUT, COMPRESSOR ATTACHING MS51922-9 (96906)		EA	4									15	1
F		WASHER, COMPRESSOR ATTACHING 13214E3476-2 (97403)			4									15	2
X2F		SPACER, COMPRESSOR ATTACHING 13214E3659 (97403)		EA	4									15	3
F		WASHER, COMPRESSOR ATTACHING 13211E8170 (97403)		EA	8									15	4
F		WASHER, COMPRESSOR ATTACHING 13214E3476-2 (97403)		EA	4									15	5
F		SCREW, COMPRESSOR ATTACHING 13211E8166 (97403)		EA	4									15	6
P F	4130-902-1497	COMPRESSOR, SINGLE-PHASE, 230-VOLT, 50/60-CYCLE WHP622H9-230-1 (01479)	A	EA	1	*	2	2	*	2	2	21	16	15	7
P F	4130-750-6654	COMPRESSOR, SINGLE PHASE, 115-VOLT, 50/60-CYCLE WHP622H9-1-115 (01479)	B	EA	1	*	2	2	*	2	2	21	16	15	7

(1) SMR CODE	(2) FEDERAL STOCK NUMBER	(3) DESCRIPTION REF NUMBER & MFR CODE	(4) USABLE ON CODE	(5) UNIT OF MEAS	(6) 30-DAY DS MAINT ALLOWANCE			(7) 30-DAY GS MAINT ALLOWANCE			(8) 1-YR ALW PER 100 EQUIP CNTGY	(9) DEPOT MAINT ALW PER 100 EQUIP	(10) ILLUS- TRATION (A) (B)		
					(A)	(B)	(C)	(A)	(B)	(C)	FIG NO	ITEM NO			
P F		COMPRESSOR, 3-PHASE, 208- VOLT, 400-CYCLE WPH422H9-208- -3 (01479)	C	EA	1	*	2	2	*	2	2	21	16	15	7
P F	4130-110-3477	COMPRESSOR, 3-PHASE, 208- VOLT, 50/60-CYCLE WPH622H9-208-3 (01479)	D	EA	1	*	2	2	*	2	2	21	16	15	7
		GROUP 15. EVAPORATOR AND CONDENSER COILS AND MOUNTING													
O	5305-087-0259	SCREW, EVAPORATOR COIL ATTACHING MS9122-05 (96906)		EA	6									16	1
O	5310-809-8546	WASHER, EVAPORATING COIL ATTACHING MS27183-8 (96906)		EA	6									16	2
P F		COIL, EVAPORATOR D44501-1 (06534)		EA	1	*	*	*	*	*	*	5	3	16	3
P F	4130-902-1482	COIL, CONDENSER 13214E3708 (97403)		EA	1	*	*	*	*	*	*	5	3	16	4
		GROUP 16. REFRIGERANT PIPING													
X2F		TUBE C44546-101 (06534)		FT	1									17	1
X2F		TUBE 13214E3817 (97403)		FT	1									17	2
X2O	5925-619-6542	GROMMET MS35490-6 (96906)		EA	1									17	3
O	5305-993-1851	SCREW, CLAMP ATTACHING MS35207-267 (96906)		EA	1									17	4
O	5310-043-2226	WASHER, CLAMP ATTACHING MS35338-24 (96906)		EA	2									17	5
O		CLAMP MS21919DG6 (96906)			1									17	6
X2O		TUBE 13214E3817 (97403)			1									17	7
O	5305-993-1851	SCREW, CLAMP ATTACHING MS35207-267 (96906)		EA	1									17	8
O	5310-043-2226	WASHER, CLAMP ATTACHING MS35338-24 (96906)		EA	1									17	9

(1) SMR CODE	(2) FEDERAL STOCK NUMBER	(3) DESCRIPTION REF NUMBER & MFR CODE	USABLE ON CODE	(4) UNIT OF MEAS	(5) QTY INC IN UNIT	(6) 30-DAY DS MAINT ALLOWANCE			(7) 30-DAY GS MAINT ALLOWANCE			(8) 1-YR ALW PER 100 EQUIP CNTGY	(9) DEPOT MAINT ALW PER 100 EQUIP	(10) ILLUS- TRATION	
						(A)	(B)	(C)	(A)	(B)	(C)	FIG NO	ITEM NO		
X20		SPACER, CLAMP ATTACHING 13211E8376-1 (97403)		EA	1	1-20	21-50	51-100	1-20	21-50	51-100			17	10
X20	5340-565-0011	CLAMP MS21919DG2 (96906)		EA	1									17	11
O	5310-877-5797	NUT, CLAMP ATTACHING MS21044N3 (96906)		EA	1									17	12
O	5305-989-7434	SCREW, CLAMP ATTACHING MS35207-263 (96906)		EA	1									17	13
X20		CLAMP 13214E3743 (97403)		EA	1									17	14
X20	5325-286-6047	GROMMET MS35490-1 (96906)		EA	1									17	15
O	5310-012-0214	WASHER, EXPANSION VALVE ATTACHING MS35338-26 (96906)		EA	2									17	16
X20		SPACER, EXPANSION VALVE ATTACHING 13211E8376-3 (97403)		EA	2									17	17
P F		VALVE, EXPANSION TCL100HW120 (70255)		EA	1	2	2	4	2	2	4	42	36	17	18
P F		COUPLING MS35927-3 (96906)		EA	1	*	*	5	*	*	5	3		17	19
X2F		TUBE 13214E3691 (97403)		FT	1									17	20
O		SCREW, CLAMP ATTACHING MS35207-267 (96906)		EA	1									17	21
O	5310-043-2220	WASHER, CLAMP ATTACHING MS35338-24 (96906)		EA	1									17	22
X20		SPACER, CLAMP ATTACHING 13211E8376-3 (97403)		EA	1									17	23
X20	5340-543-4394	CLAMP MS21919DG6 (96906)		EA	1									17	24
X20		CLAMP MS21919DG4 (96906)		EA	1									17	25
X2F		TUBE 13214E3667 (97403)		FT	1									17	26
O	5310-811-3494	NUT, BRACKET ATTACHING MS21044N08 (96906)		EA	2									17	27
O	5310-809-8544	WASHER, BRACKET ATTACHING MS27183-7 (96906)		EA	2									17	28
O	5305-964-6194	SCREW, BRACKET ATTACHING MS35206-246 (96906)		EA	2									17	29

(1) SMR CODE	(2) FEDERAL STOCK NUMBER	(3) DESCRIPTION REF NUMBER & MFR CODE	(4) USABLE ON CODE	(5) UNIT OF MEAS	QTY INC IN UNIT	(6) 30-DAY DS MAINT ALLOWANCE			(7) 30-DAY GS MAINT ALLOWANCE			(8) 1-YR ALW PER 100 EQUIP CNTGY	(9) DEPOT MAINT ALW PER 100 EQUIP	(10) ILLUS- TRATION	
						(A)	(B)	(C)	(A)	(B)	(C)	FIG NO	ITEM NO		
X2O		BRACKET, SIGHT GLASS SUPPORT 13214E3419 (97403)		EA	1									17	30
P F	4130-073-8404	SIGHT GLASS SA-K13 (78462)		EA	1	*	2	2	*	2	2	21	16	17	31
F		GASKET, SIGHT GLASS			1									17	32
X2O		SPACER, SIGHT GLASS 13211E8242 (97403)		EA	1									17	33
X2F		TUBE C44561-101 (06534)		FT	1									17	34
O	5305-993-1851	SCREW, CLAMP ATTACHING MS35207-267 (96906)		EA	1									17	35
X2O	5340-543-4394	CLAMP MS21919DG6 (96906)		EA	1									17	36
X2F		TUBE 13214E3611 (97403)		FT	1									17	37
P F	4730-079-0567	TEE 13211E4043-6 (97403)		EA	1	*	*	*	*	*	*	10	6	17	38
P F		RELIEF VALVE 3001X3-540 (58553)		EA	1	*	*	*	*	*	*	5	3	17	39
P F	4730-143-8933	TEE 13214E3411-3 (97403)		EA	1	*	*	*	*	*	*	5	3	17	40
X2F		TUBE 13214E3801 (97403)		FT	1									17	41
X2F		TUBE 13214E3696 (97403)		FT	1									17	42
X2F		TUBE 13214E3819 (97403)		FT	1									17	43
X2F		TUBE 13214E3732 (97403)		FT	1									17	44
O	5305-989-7435	SCREW, CLAMP ATTACHING MS35207-264 (96906)		EA	1									17	45
O	5310-043-2226	WASHER, CLAMP ATTACHING MS35338-24 (96906)		EA	1									17	46
X2O		CLAMP MS21919-42 (96906)		EA	1									17	47
X2O		CLAMP MS21919-34 (96906)		EA	1									17	48
O	5305-068-0505	SCREW, BRACKET ATTACHING MS90726-5 (96906)		EA	1									17	49
O	5305-989-7435	SCREW, BRACKET ATTACHING MS35207-264 (96906)		EA	2									17	50

(1) SMR CODE	(2) FEDERAL STOCK NUMBER	(3) DESCRIPTION REF NUMBER & MFR CODE	USABLE ON CODE	(4) UNIT OF MEAS	(5) QTY INC IN UNIT	(6) 30-DAY DS MAINT ALLOWANCE			(7) 30-DAY GS MAINT ALLOWANCE			(8) 1-YR ALW PER 100 EQUIP CNTGY	(9) DEPOT ALW PER 100 EQUIP	(10) ILLUS- TRATION	
						(A)	(B)	(C)	(A)	(B)	(C)	FIG NO	(B) ITEM NO		
X2O		BRACKET, DEHYDRATOR AND RECEIVER SUPPORT 13214E3731 (97403)		EA	1									17	51
P F	4130-071-3940	DEHYDRATOR ADK-083 (70255)		EA	1	2	4	9	2	4	9	105	100	17	52
X2F		RECEIVER 13214E3798 (97403)		EA	1									17	53
X2F		TUBE 13214E3668 (97403)		FT	1									17	54
P F	4730-264-9151	COUPLING MS35927-2 (96906)		EA	1	*	*	*	*	*	*	10	6	17	55
X2F		TUBE 13214E3679 (97403)		FT	1									17	56
O	5310-877-5797	NUT, CLAMP ATTACHING MS21044N3 (96906)		EA	1									17	57
O	5305-993-1851	SCREW, CLAMP ATTACHING MS35207-267 (96906)		EA	1									17	58
X2O		SPACER, CLAMP ATTACHING 13211E8376-1 (97403)		EA	1									17	59
X2O	5340-205-6301	CLAMP MS21919DG4 (96906)		EA	1									17	60
X2F		TUBE C44559-101 (06534)		FT	1									17	61
X2F		BUSHING 13211E3799-1 (97403)		EA	1									17	62
P F	4730-264-9151	COUPLING MS35927-2 (96906)		EA	1	REF	REF	REF	REF	REF	REF	REF	REF	17	63
X2F		TUBE 13214E3676 (97403)		FT	1									17	64
X2O	5325-619-6542	GROMMET MS35490-6 (96906)		EA	1									17	65
O	5305-993-1851	SCREW, CLAMP ATTACHING MS35207-267 (96906)		EA	1									17	66
O	5310-043-2226	WASHER, CLAMP ATTACHING MS35338-24 (96906)		EA	1									17	67
X2O		SPACER, CLAMP ATTACHING 13211E8376-1 (97403)		EA	1									17	68
X2O	5340-543-4394	CLAMP MS21919DG6 (96906)		EA	1									17	69
O	5310-877-5797	NUT, CLAMP ATTACHING MS21044N3 (96906)		EA	1									17	70

(1) SMR CODE	(2) FEDERAL STOCK NUMBER	(3) DESCRIPTION REF NUMBER & MFR CODE	USABLE ON CODE	(4) UNIT OF MEAS	(5) QTY INC IN UNIT	(6) 30-DAY DS MAINT ALLOWANCE			(7) 30-DAY GS MAINT ALLOWANCE			(8) 1-YR ALW PER 100 EQUIP CNTGY	(9) DEPOT MAINT ALW PER 100 EQUIP	(10) ILLUS- TRATION	
						(A)	(B)	(C)	(A)	(B)	(C)	FIG NO	ITEM NO		
O	5305-989-7434	SCREW, CLAMP ATTACHING MS35207-263 (96906)		EA	1	1-20	21-50	51-100	1-20	21-50	51-100			17	71
X2O		CLAMP 13214E3743 (97403)		EA	1									17	72
X2O	5325-286-6047	GROMMET MS35490-1 (96906)		EA	1									17	73
O	5310-012-0219	WASHER, EXPANSION VALVE ATTACHING MS35338-26 (96906)		EA	2									17	74
O		SPACER, EXPANSION VALVE ATTACHING 13211E8376-3 (97403)		EA	2									17	75
P F	4820-107-0992	VALVE, EXPANSION TCL25CL (70255)		EA	1	2	2	4	2	2	4	42	36	17	76
X2F		TUBE 13214E3813 (97403)		EA	1									17	77
P F		ELBOW MS35922-4-3 (96906)		EA	1	*	*	*	*	*	*	5	3	17	78
O	5305-995-3441	SCREW, CLAMP ATTACHING MS35207-269 (96906)		EA	2									17	79
O		WASHER, CLAMP ATTACHING MS35338-24 (96906)		EA	2									17	80
X2O		SPACER, CLAMP ATTACHING 13211E8376-2 (97403)		EA	2									17	81
F		CLAMP MS21919DG6 (96906)			2									17	82
X2F		TUBE 13214E3674 (97403)		FT	1									17	83
X2F		TUBE 13214E3684 (97403)		FT	1									17	84
X2O	5325-727-0562	GROMMET MS35490-14 (96906)		EA	1									17	85
X2F		TUBE 13214E3369-2 (97403)		FT	1									17	86
P F	4730-203-4922	TEE 13211E4043-11 (97403)		EA	1	*	*	*	*	*	*	5	3	17	87
X2F		ACCESS FITTING 45532-101 (06534)		EA	1									17	88
F		BUSHING			1									17	89
P F	4730-208-4921	TEE 13211E4043-29 (97403)		EA	1	*	*	*	*	*	*	5	3	17	90
X2O		TUBE 13214E3687 (97403)		FT	1									17	91

(1) SMR CODE	(2) FEDERAL STOCK NUMBER	(3) DESCRIPTION REF NUMBER & MFR CODE	(4) USABLE ON CODE	(5) UNIT OF MEAS	QTY	(6) 30-DAY DS MAINT ALLOWANCE			(7) 30-DAY GS MAINT ALLOWANCE			(8)	(9)	(10) ILLUS- TRATION	
						(A)	(B)	(C)	(A)	(B)	(C)	1-YR ALW PER 100 EQUIP CNTGY	DEPOT MAINT ALW PER 100 EQUIP	(A)	(B)
X2O		CLAMP MS35824-3 (96906)		EA	1									17	92
P F		STRAINER 13214E3797 (97403)		EA	1	*	*	*	*	*	*	5		17	93
X2F		TUBE 13214E3677 (97403)		FT	1									17	94
X2F		TUBE 13214E3803 (97403)		FT	1									17	95
P F		TEE MS35929-3 (96906)		EA	1	*	*	*	*	*	*	10	6	17	96
O	5310-877-5797	NUT, CLAMP ATTACHING MS21044N3 (96906)		EA	1									17	97
O	5305-993-1851	SCREW, CLAMP ATTACHING MS35207-267 (96906)		EA	1									17	98
X2O		SPACER, CLAMP ATTACHING 13211E8376-1 (97403)		EA	1									17	99
X2O	5340-543-4394	CLAMP MS21919DG6 (96906)		EA	1									17	100
X2F		TUBE D44529-101 (06534)		FT	1									17	101
X2F		TUBE C44530-101 (06534)		FT	1									17	102
O	5310-877-5797	NUT, CLAMP ATTACHING MS21044N3 (96906)		EA	1									17	103
O	5305-989-7434	SCREW, CLAMP ATTACHING MS35207-263 (96906)		EA	1									17	104
X2O	5340-565-0004	CLAMP MS21919DG10 (96906)		EA	1									17	105
P F		REGULATOR, FLUID PRESSURE 104A-70034-105 (91494)		EA	1	2	2	3	2	2	3	35		17	106
X2F		TUBE 13214E3681 (97403)		FT	1									17	107
P F		TEE 13211E4043-6 (97403)		EA	1	REF	REF	REF	REF	REF	REF	REF	REF	17	108
X2F		TUBE 13214E3672 (97403)		FT	1									17	109
X2F		TUBE 13214E3364-2 (97403)		FT	1									17	110
P F		TEE MS35929-3 (96906)		EA	1	REF	REF	REF	REF	REF	REF	REF	REF	17	111
P F	4730-926-9649	TEE 13214E3411-1 (97403)		EA	1	*	*	*	*	*	*	10	6	17	112

(1) SMR CODE	(2) FEDERAL STOCK NUMBER	(3) DESCRIPTION REF NUMBER & MFR CODE	USABLE ON CODE	(4) UNIT OF MEAS	(5) QTY INC IN UNIT	(6) 30-DAY DS MAINT ALLOWANCE			(7) 30-DAY GS MAINT ALLOWANCE			(8) 1-YR ALW PER 100 EQUIP CNTGY	(9) DEPOT MAINT ALW PER 100 EQUIP	(10) ILLUS- TRATION	
						(A)	(B)	(C)	(A)	(B)	(C)	FIG NO	(A)	(B) ITEM NO	
X2F		TUBE 13214E3364-2 (97403)		FT	1									17	113
X2F		ACCESS FITTING 45532-102 (06534)		EA	1									17	114
P F	4730-926-9649	TEE 13214E3411-1 (97403)		EA	1	REF	REF	REF	REF	REF	REF	REF	REF	17	115
O	5310-877-5797	NUT, CLAMP ATTACHING MS21044N3 (96906)		EA	1									17	116
O	5305-993-1851	SCREW, CLAMP ATTACHING MS35207-267 (96906)		EA	1									17	117
X2O		SPACER CLAMP ATTACHING 13211E8376-1 (97403)		EA	1									17	118
O	5340-543-4394	CLAMP MS21919DG6 (96906)		EA	1									17	119
X2F		TUBE 13214E3624 (97403)		EA	1									17	120
O	5305-995-3441	SCREW, CLAMP ATTACHING MS35207-269 (96906)		EA	1									17	121
O		WASHER, CLAMP ATTACHING MS35338-24 (96906)		EA	1									17	122
X2O		SPACER, CLAMP ATTACHING 13214E3372-2 (96906)		EA	1									17	123
X2O		CLAMP MS21919DG6 (96906)		EA	1									17	124
O		NUT, CLAMP ATTACHING			2									17	125
O		SCREW, CLAMP ATTACHING			2									17	126
X2O		SPACER CLAMP ATTACHING 13211E8376-1 (97403)		EA	2									17	127
O	5340-543-4394	CLAMP MS21919DG6 (96906)		EA	2									17	128
X2O		TUBE 13214E3688 (97403)		FT	1									17	129
F		SCREW, BRACKET ATTACHING			2									17	130
F		BRACKET, SOLENOID VALVE SUPPORT			1									17	131

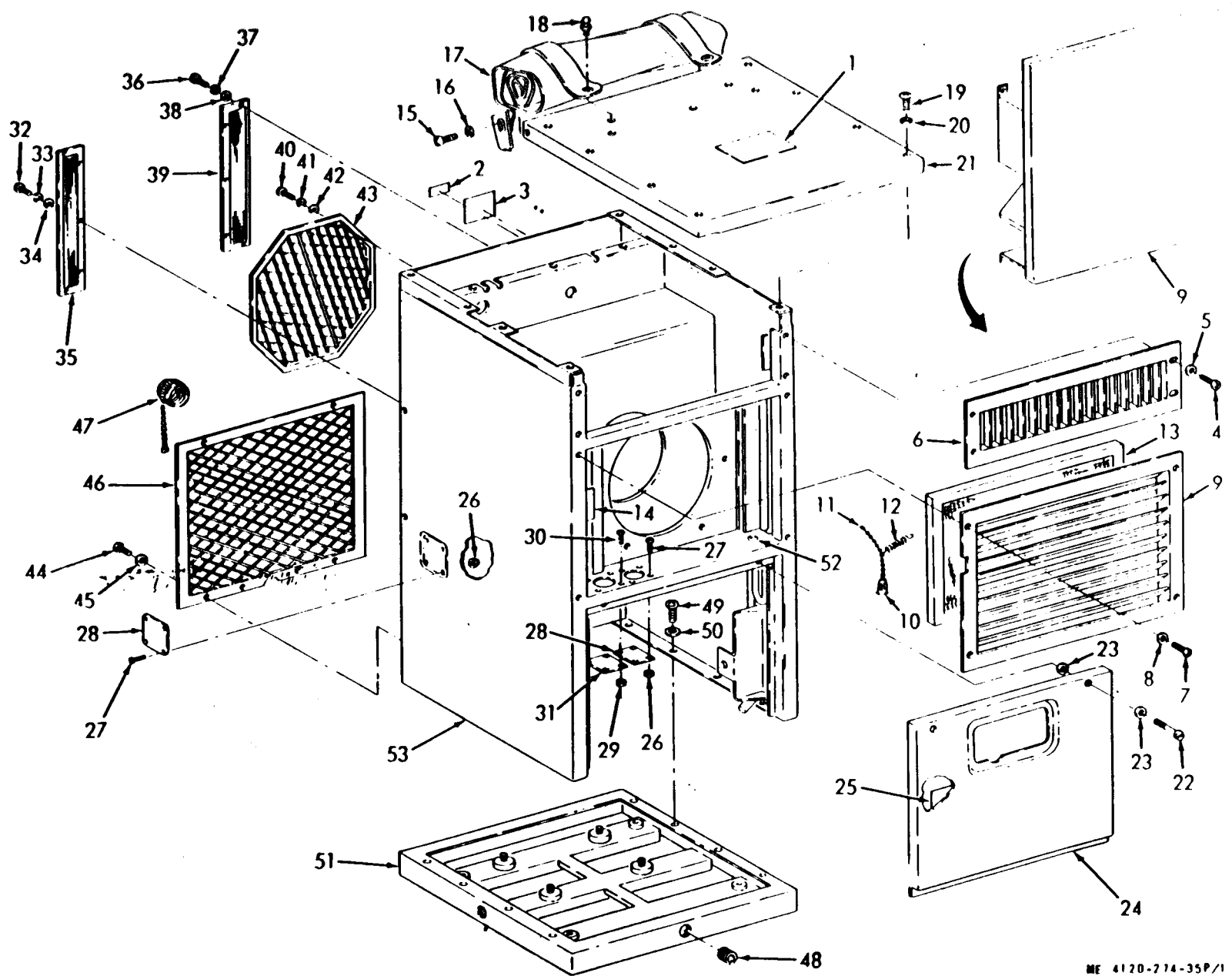
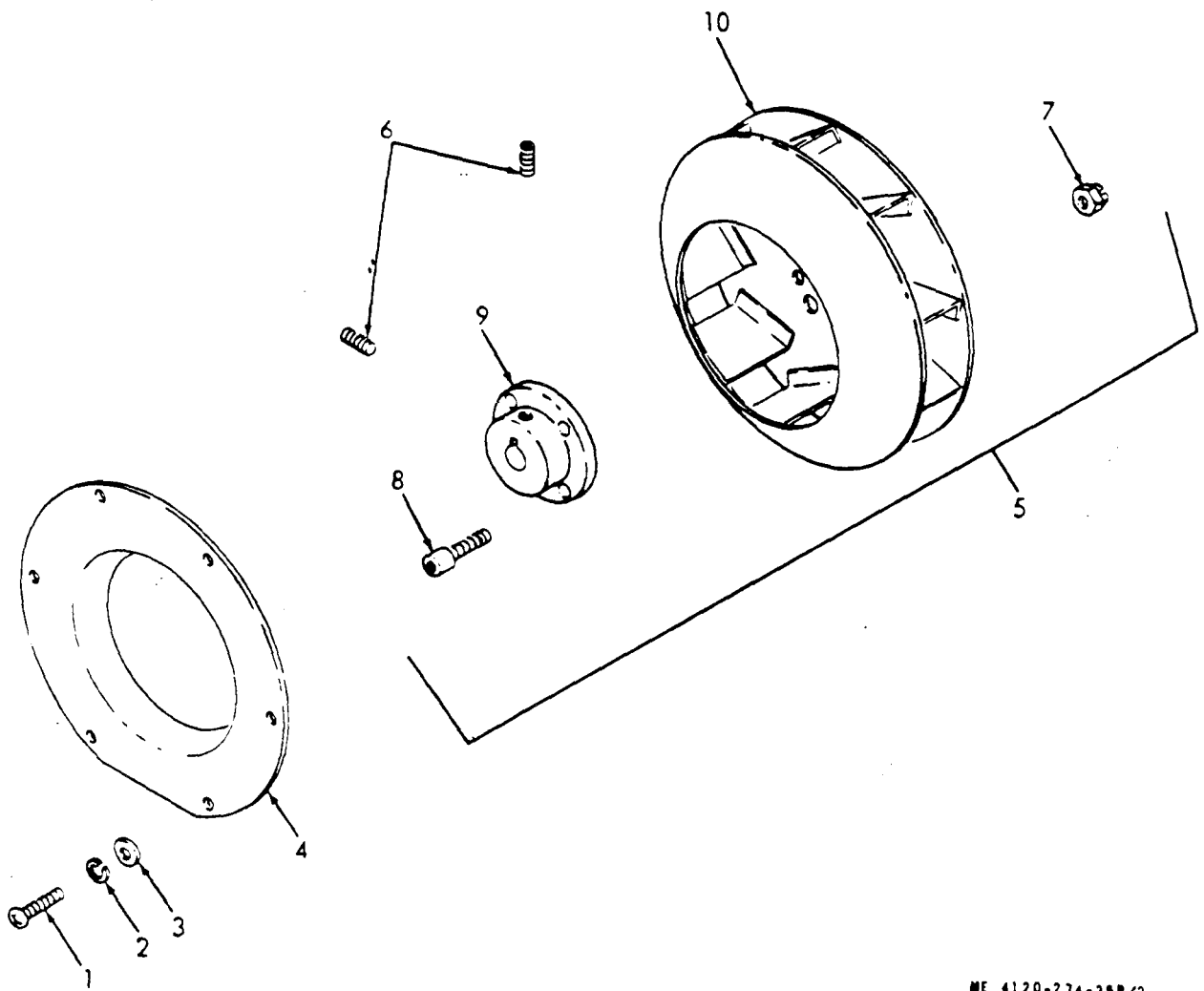


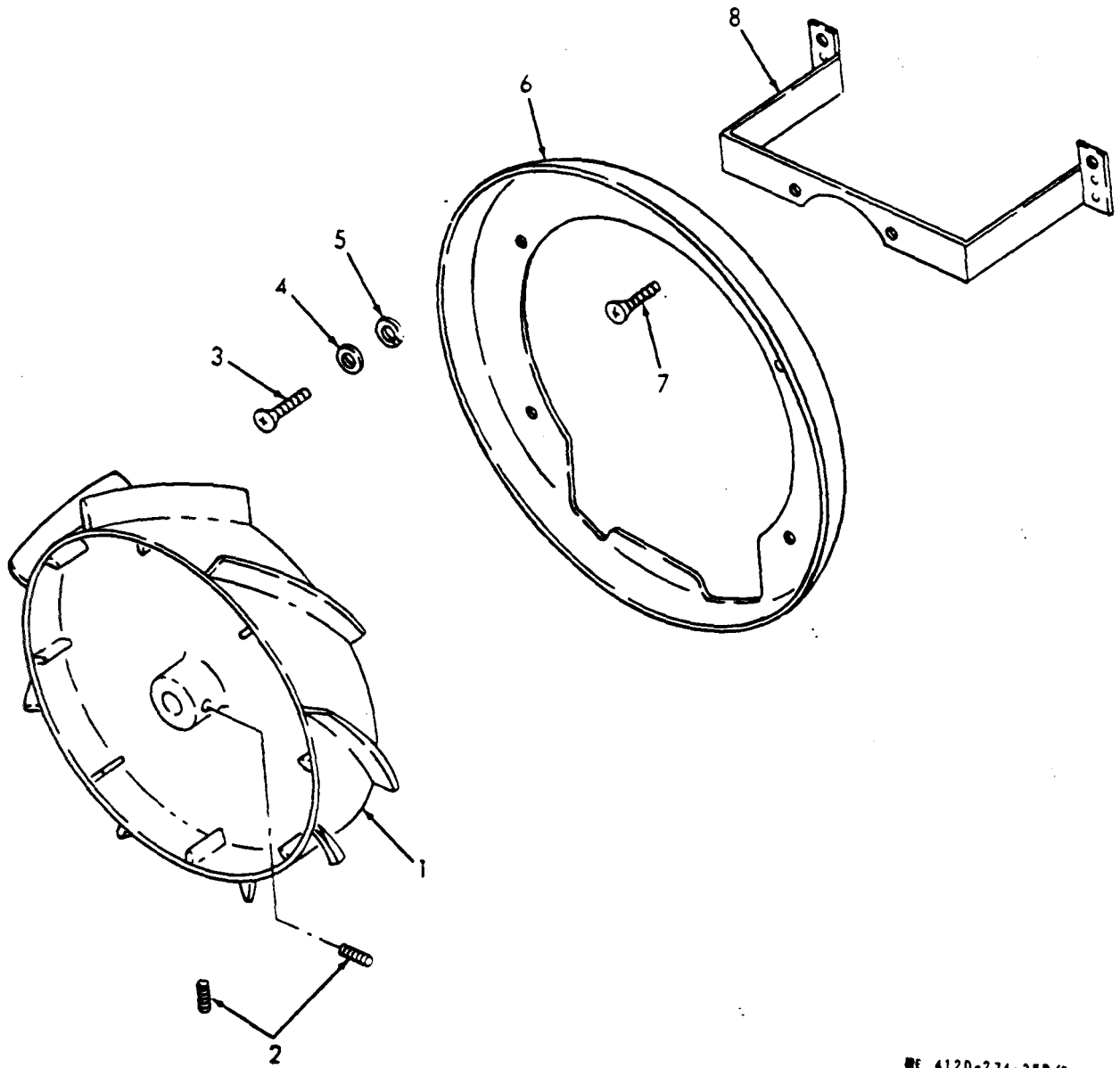
FIGURE 1. CASING ASSEMBLY

ME 4120-274-35P/1



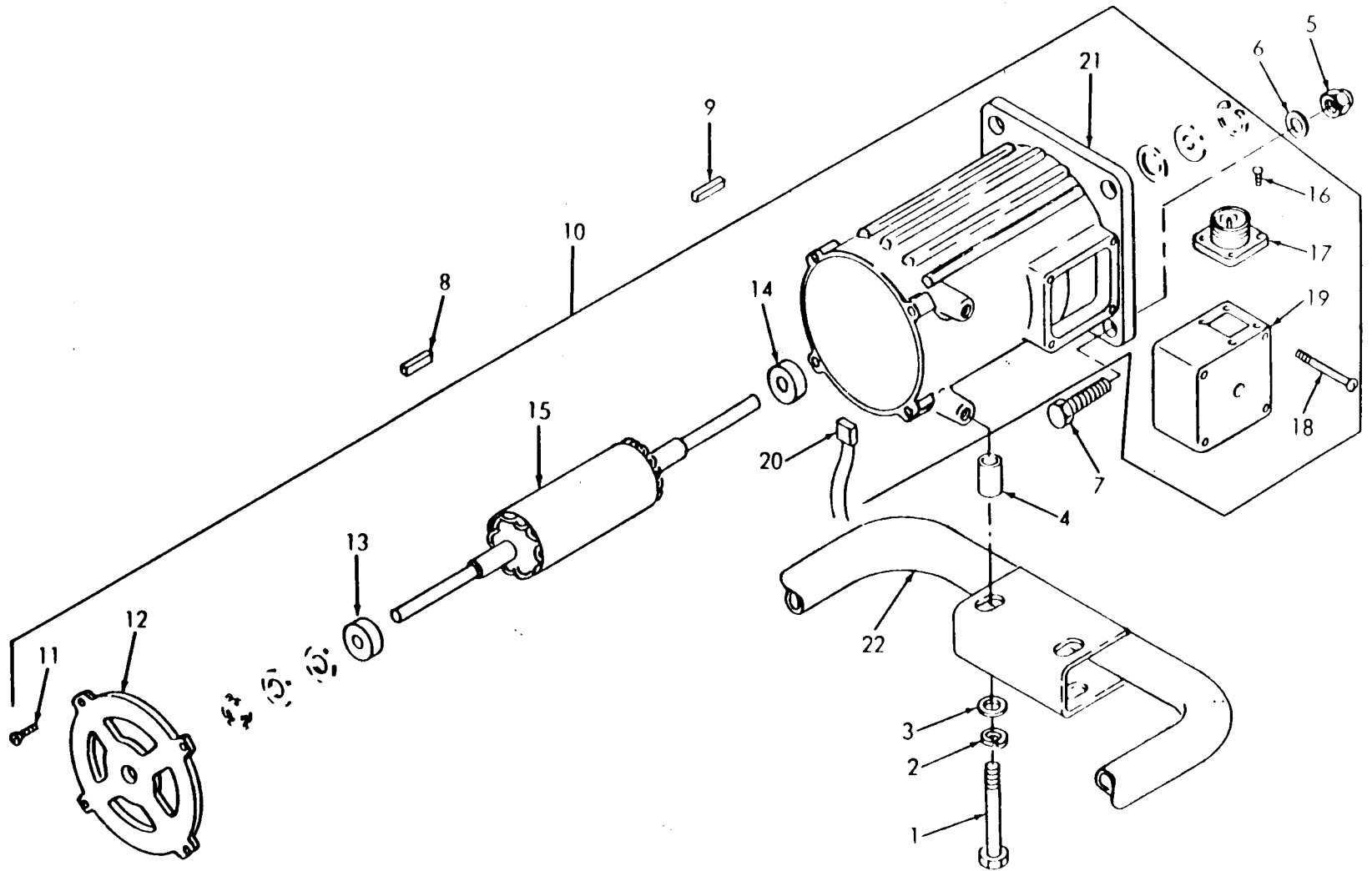
ME 4120-274-35P/2

FIGURE 2. CENTRIFUGAL FAN AND INLET RING



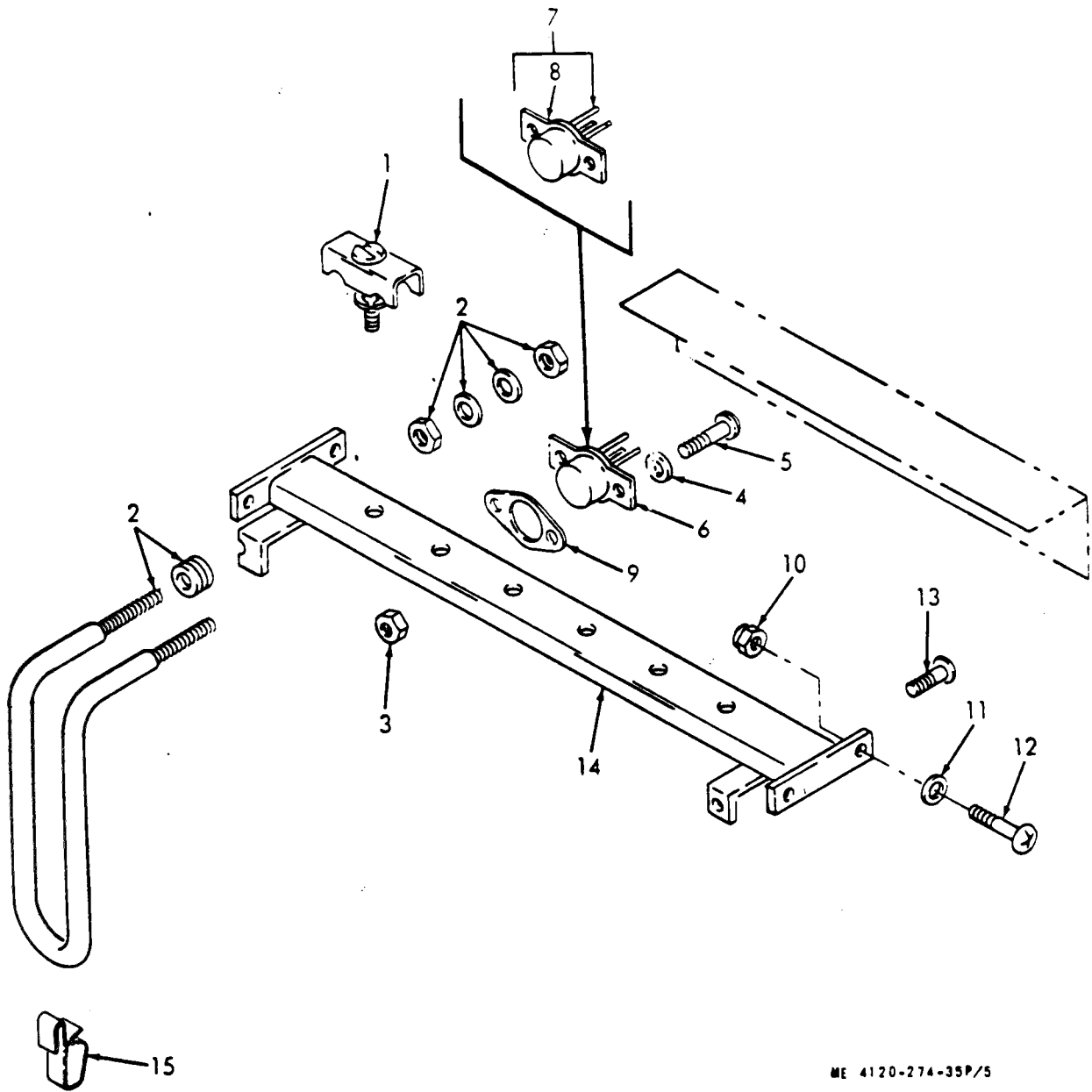
DE 4120-274-35P/3

FIGURE 3. AXIAL FAN AND BAFFLE



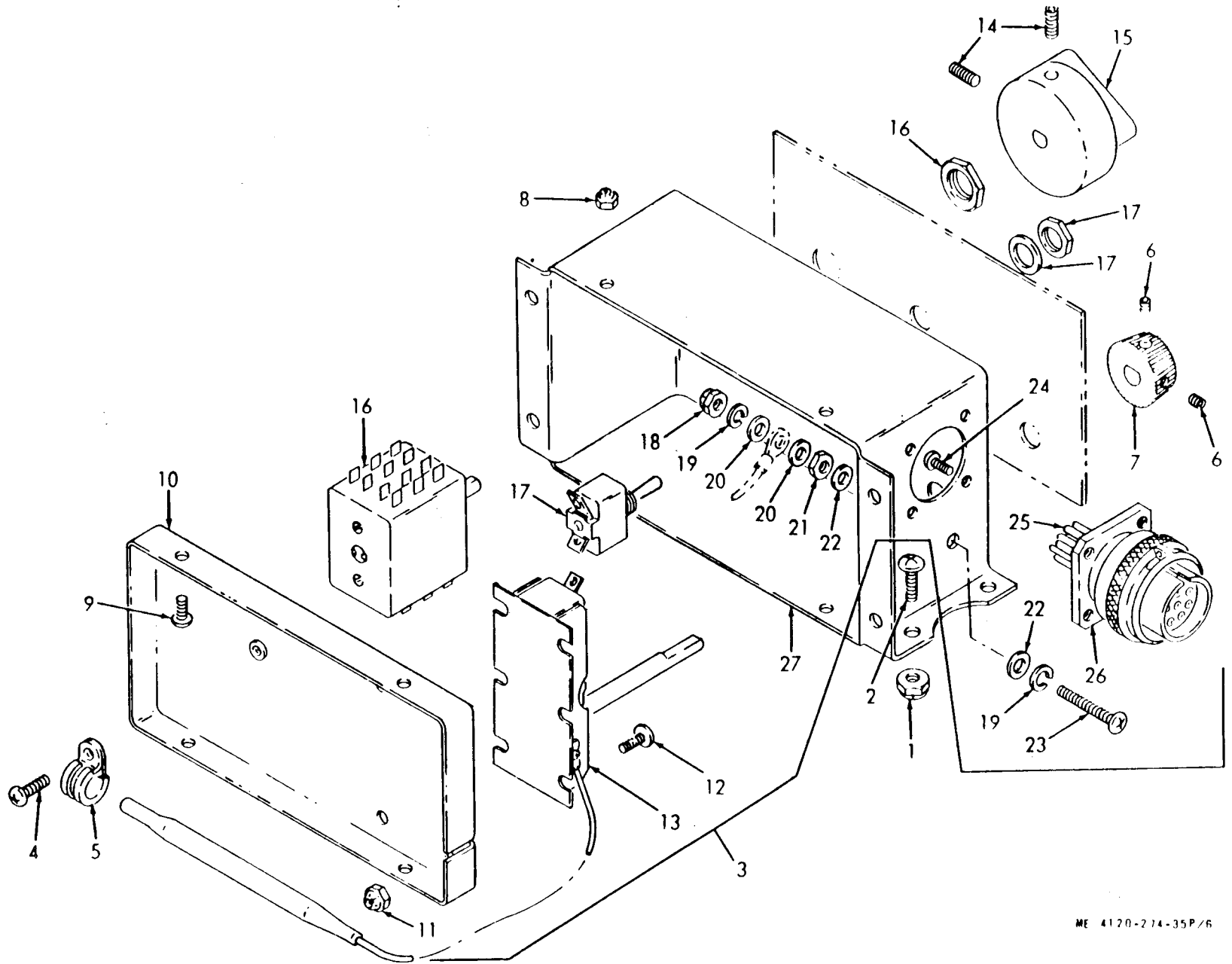
ME 4120-274-35P/4

FIGURE 4. ELECTRIC MOTOR AND MOUNTING



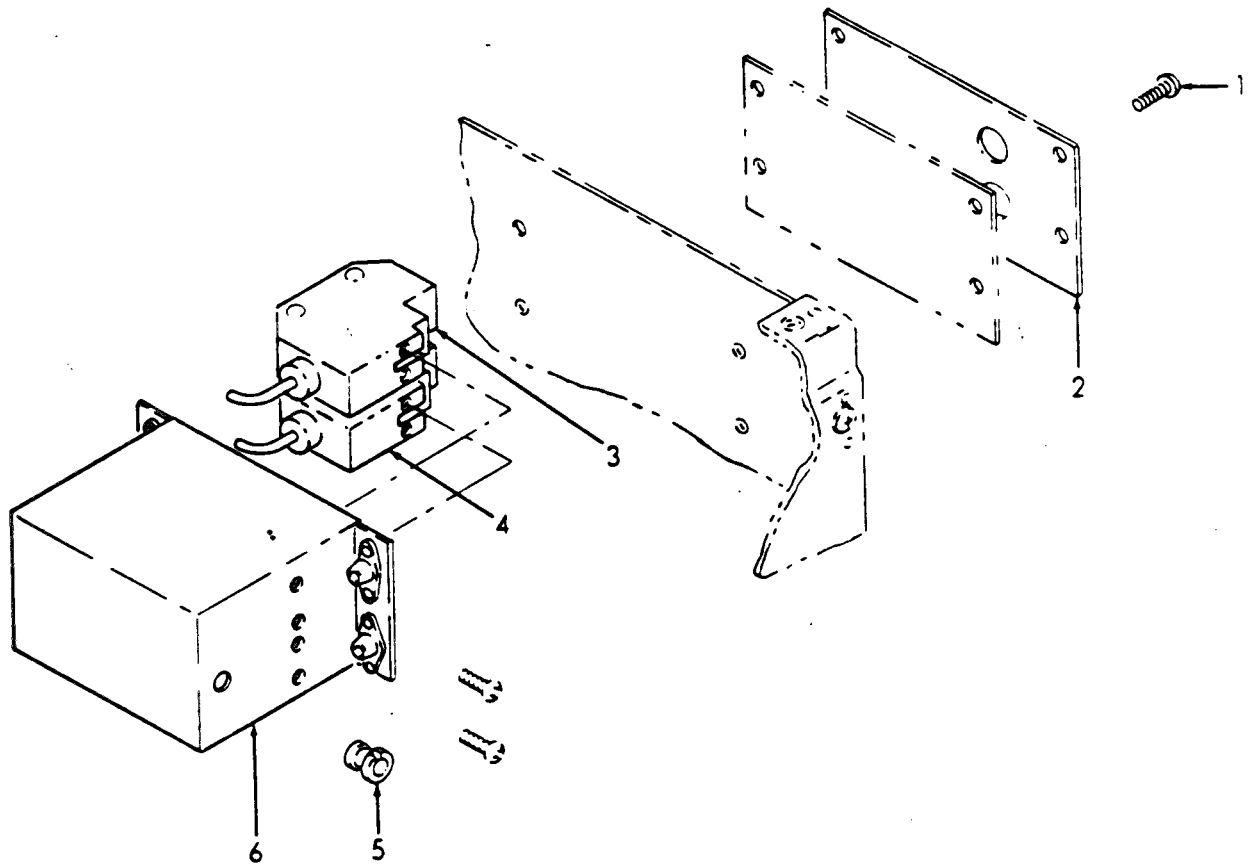
ME 4120-274-35P/5

FIGURE 5. HEATING SYSTEM



ME 4120-274-35P/6

FIGURE 6. CONTROL PANEL ASSEMBLY AND BLOCKOFF ASSEMBLY



ME 4120-274-35P/1

FIGURE 7. PRESSURE SWITCHES

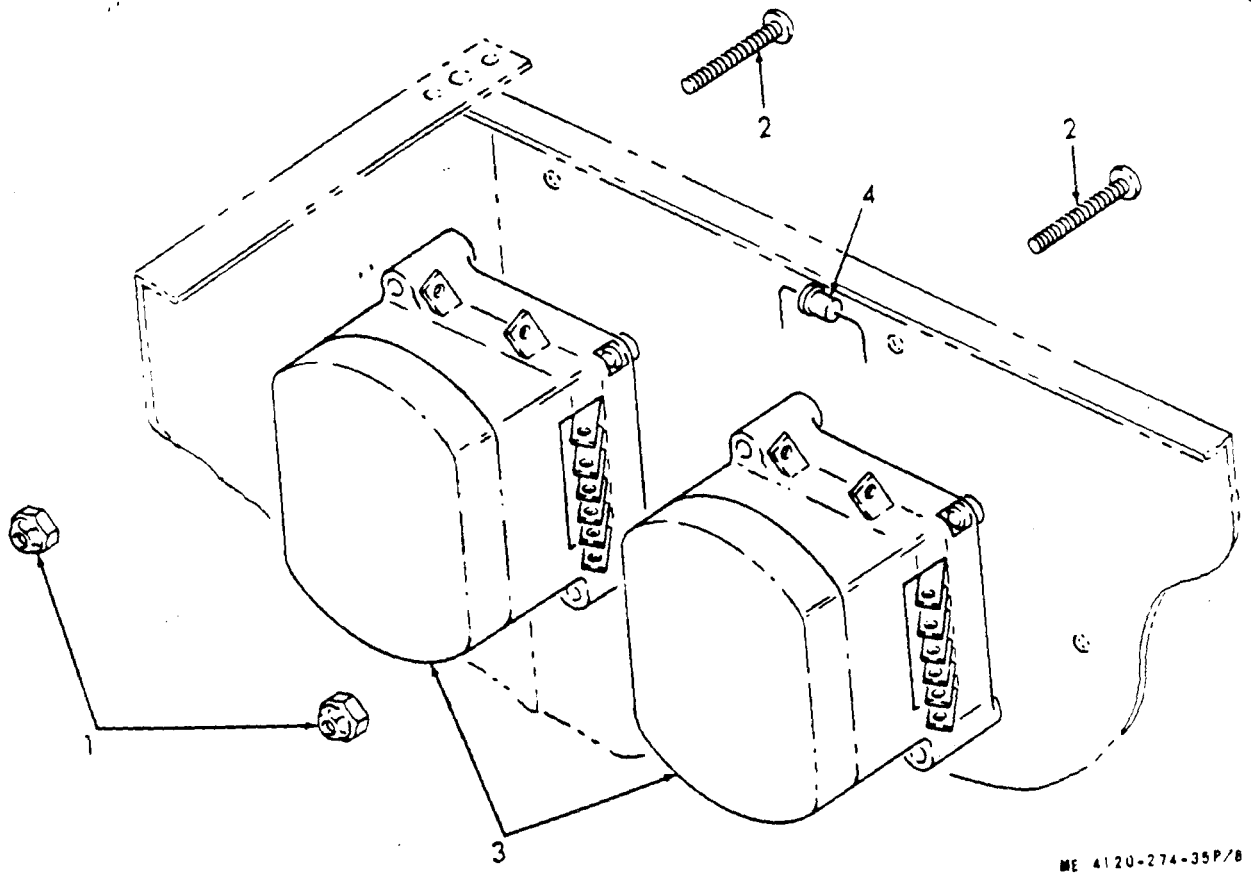


FIGURE 8. RELAY ASSEMBLIES

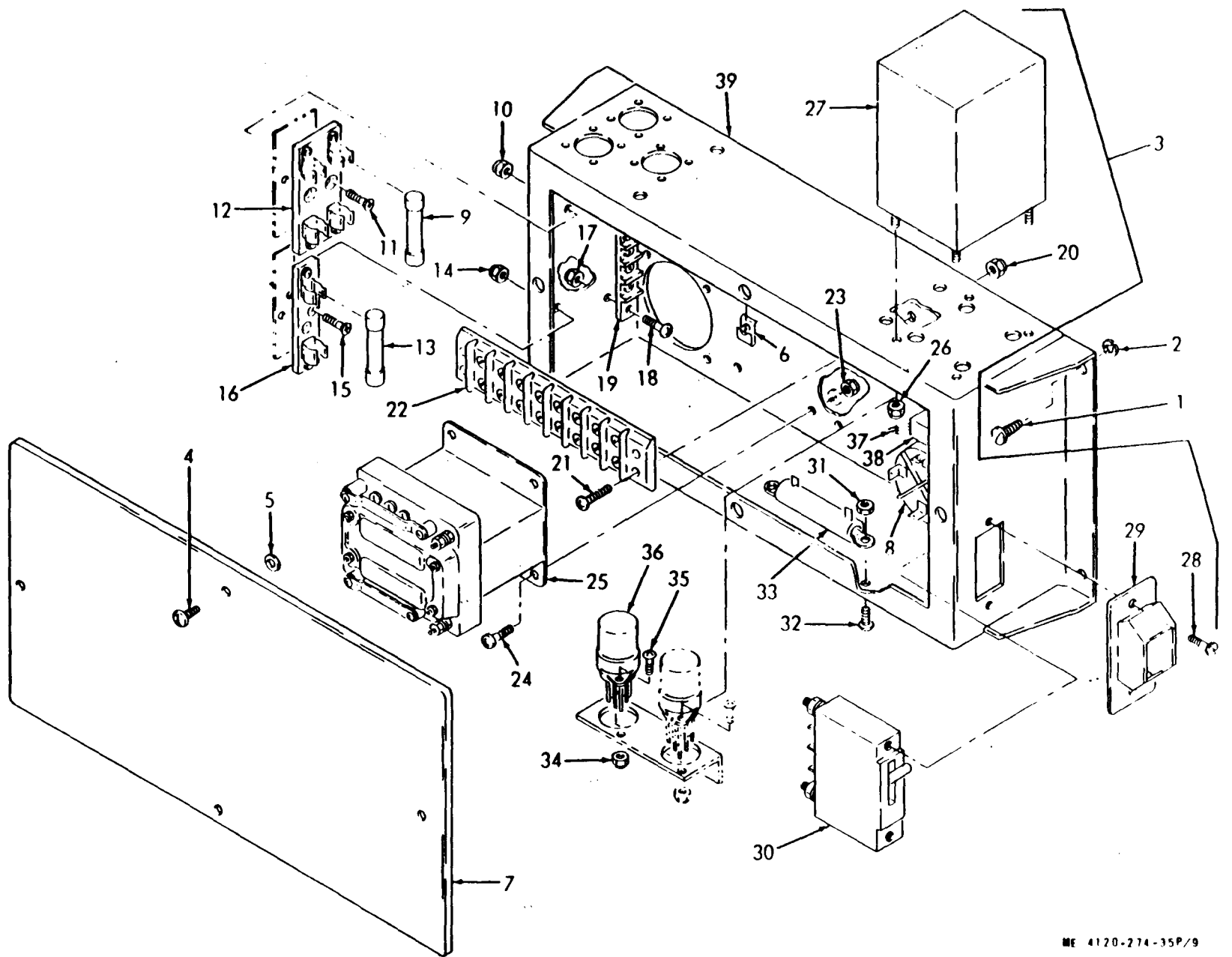
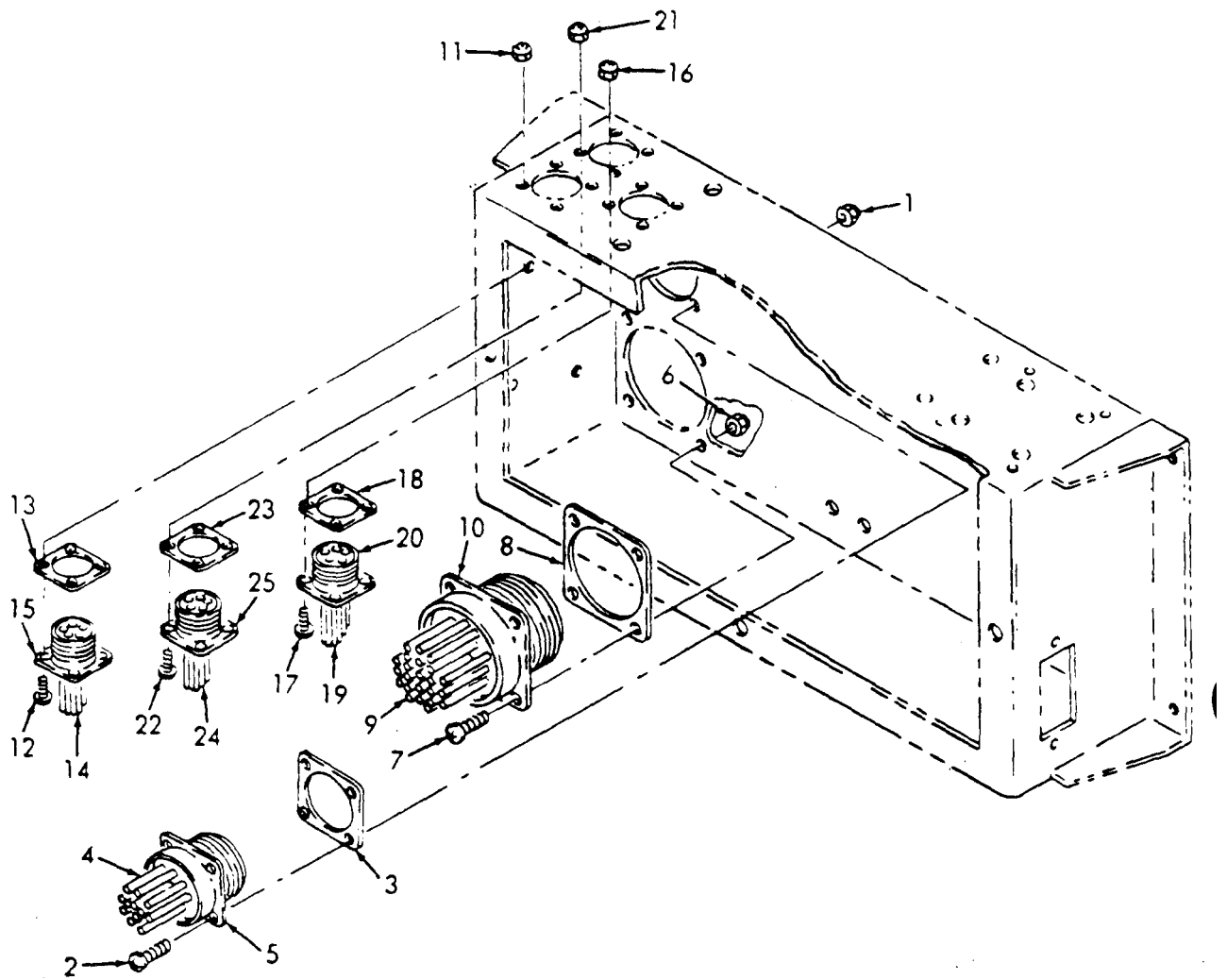
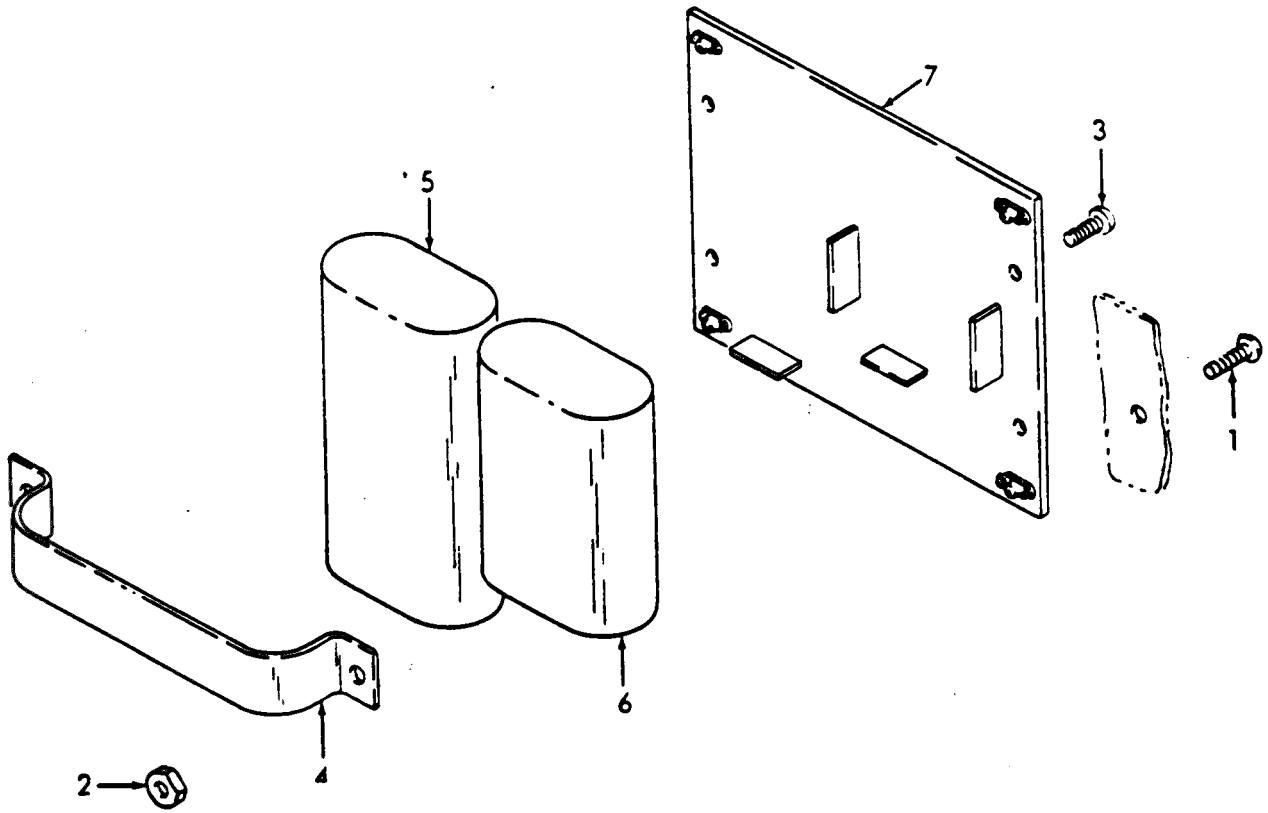


FIGURE 9. JUNCTION BOX ASSEMBLY



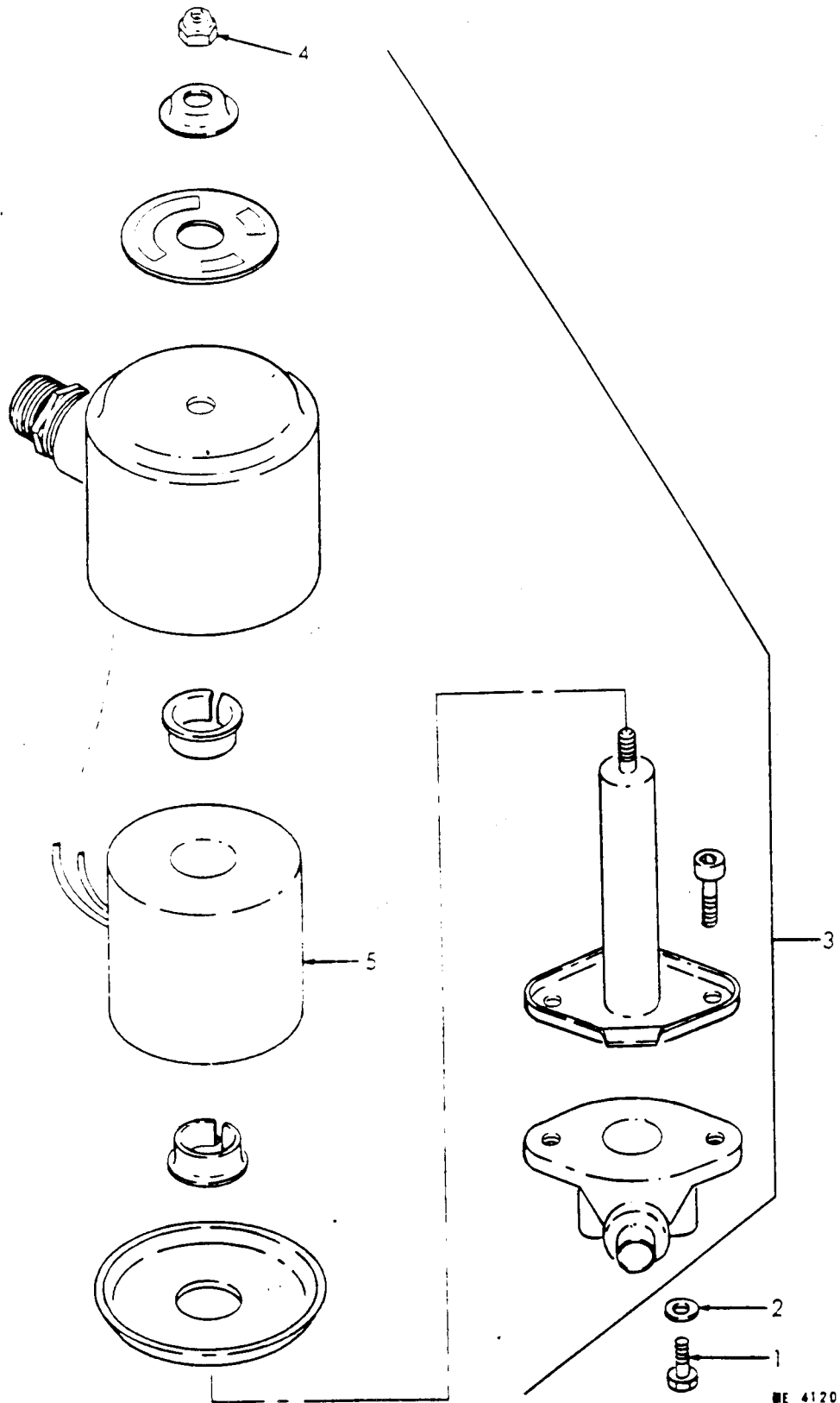
ME 4 20-274-35P/10

FIGURE 10. JUNCTION BOX ELECTRICAL WIRING HARNESSSES



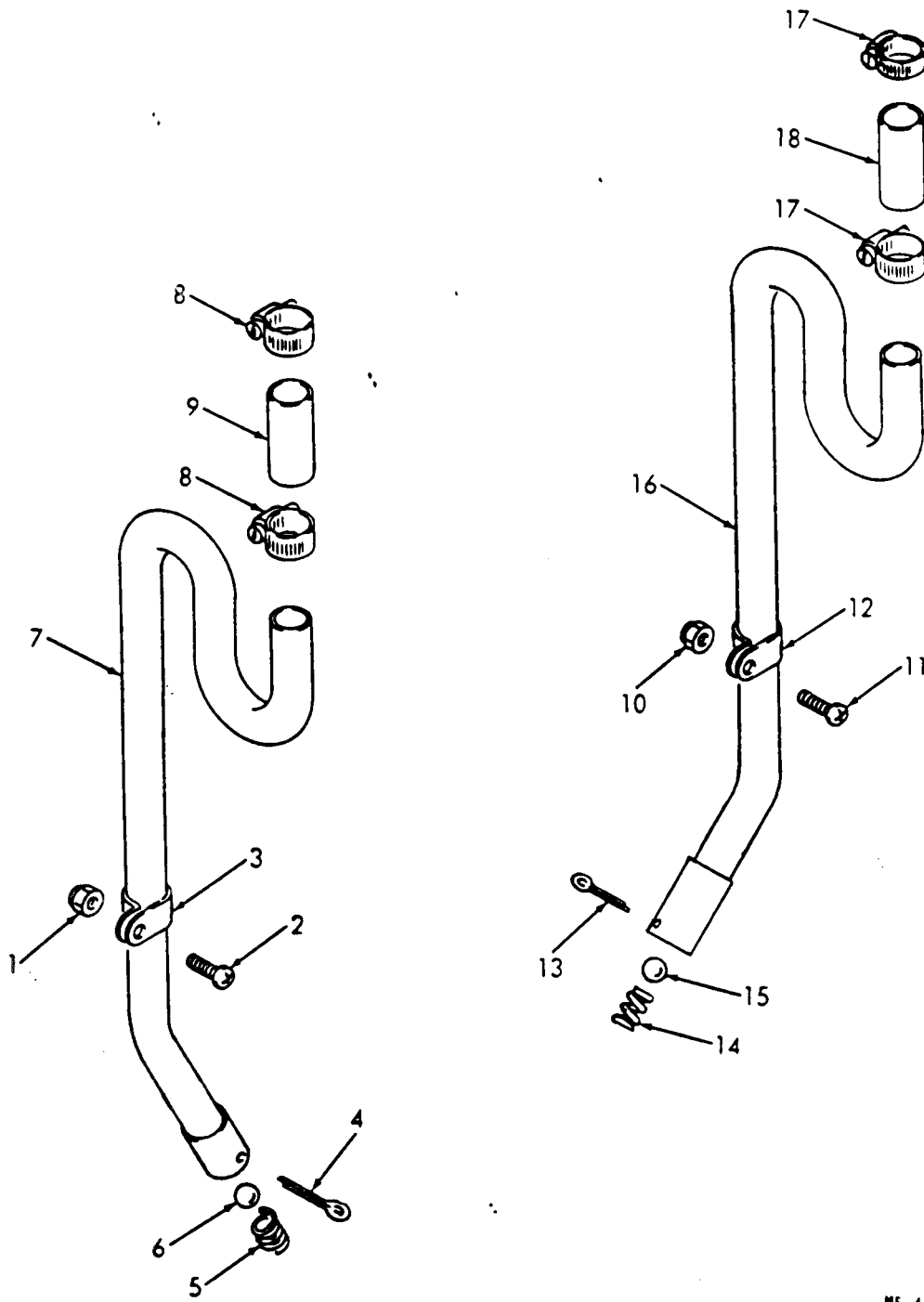
ME 4120-274-35P/11

FIGURE 11. CAPACITORS



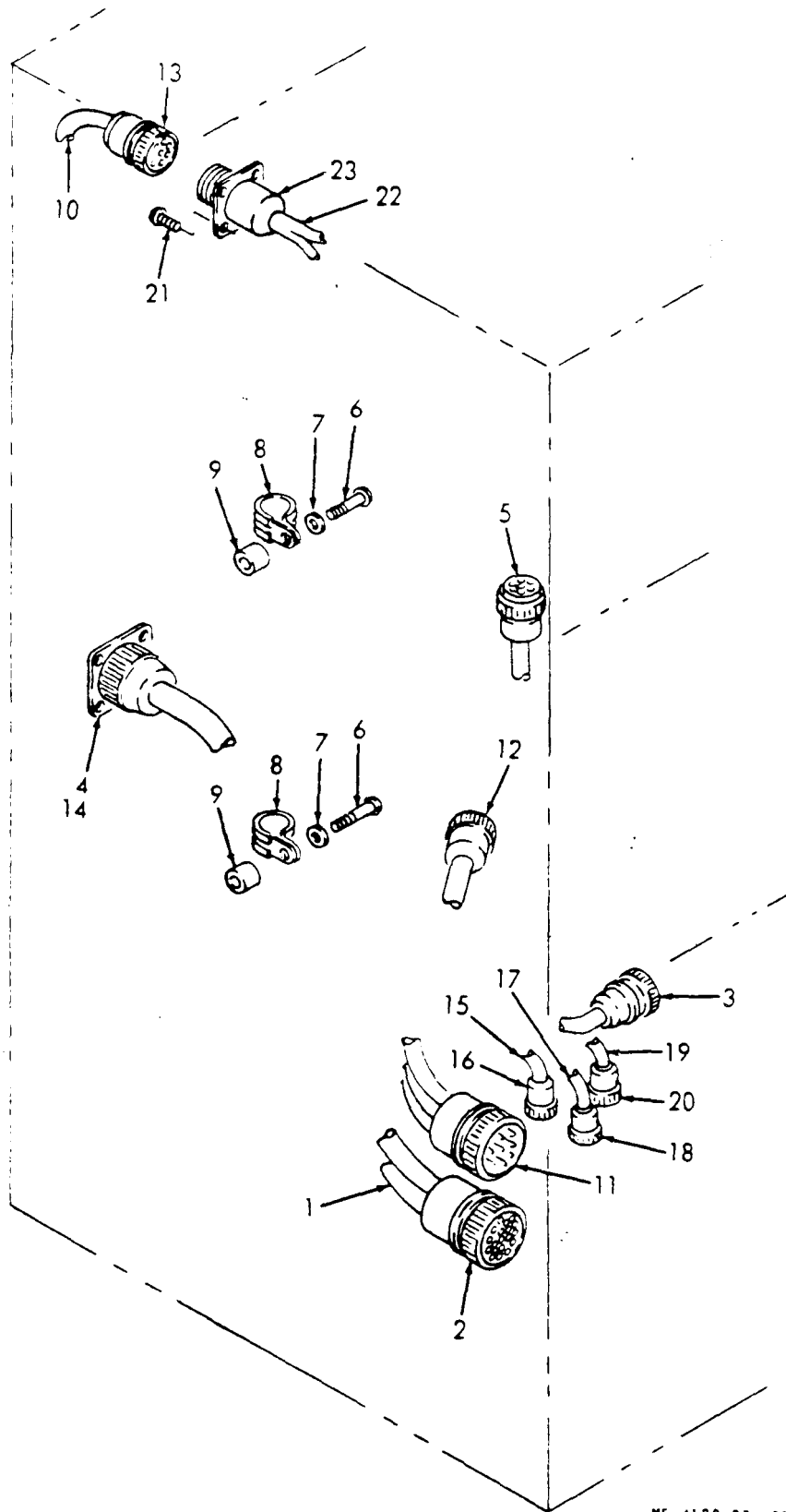
ME 4120-274-35P/12

FIGURE 12. SOLENOID VALVES



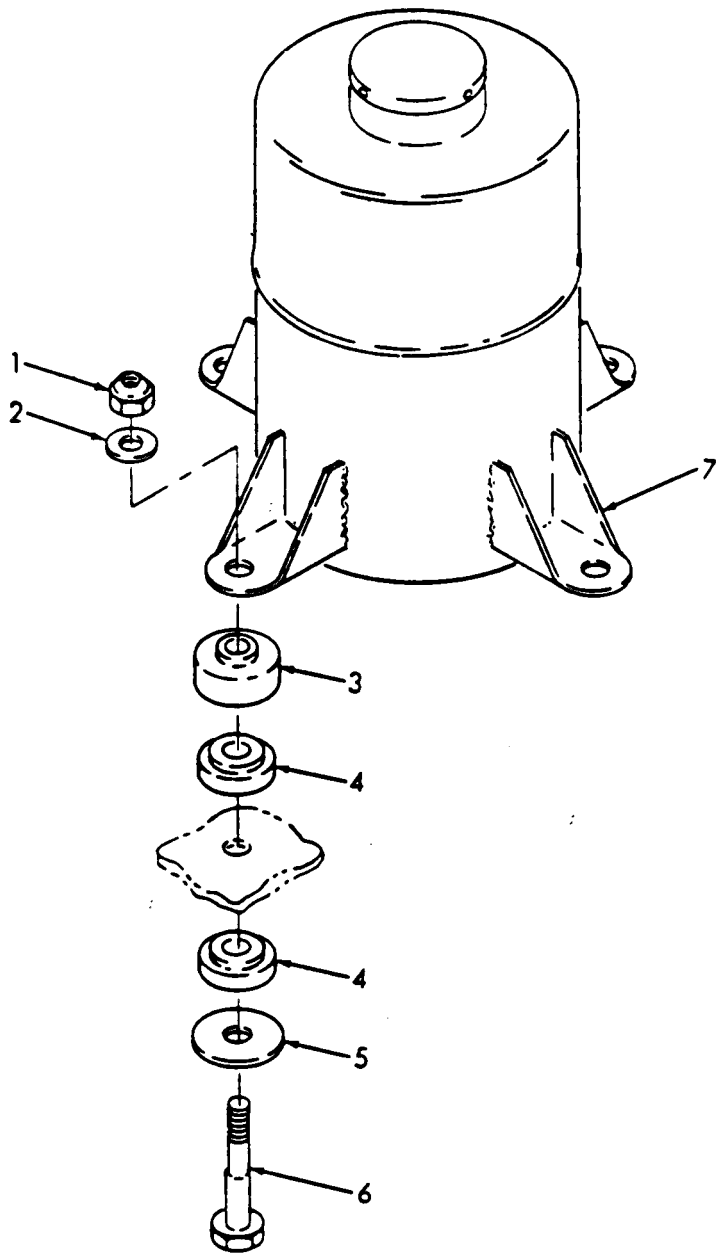
ME 4120-274-35P/13

FIGURE 13. DRAIN HOSES



ME 4120-274-35P/14

FIGURE 14. ELECTRICAL WIRING HARNESSSES



ME 4120-274-359/15

FIGURE 15. COMPRESSOR AND MOUNTING

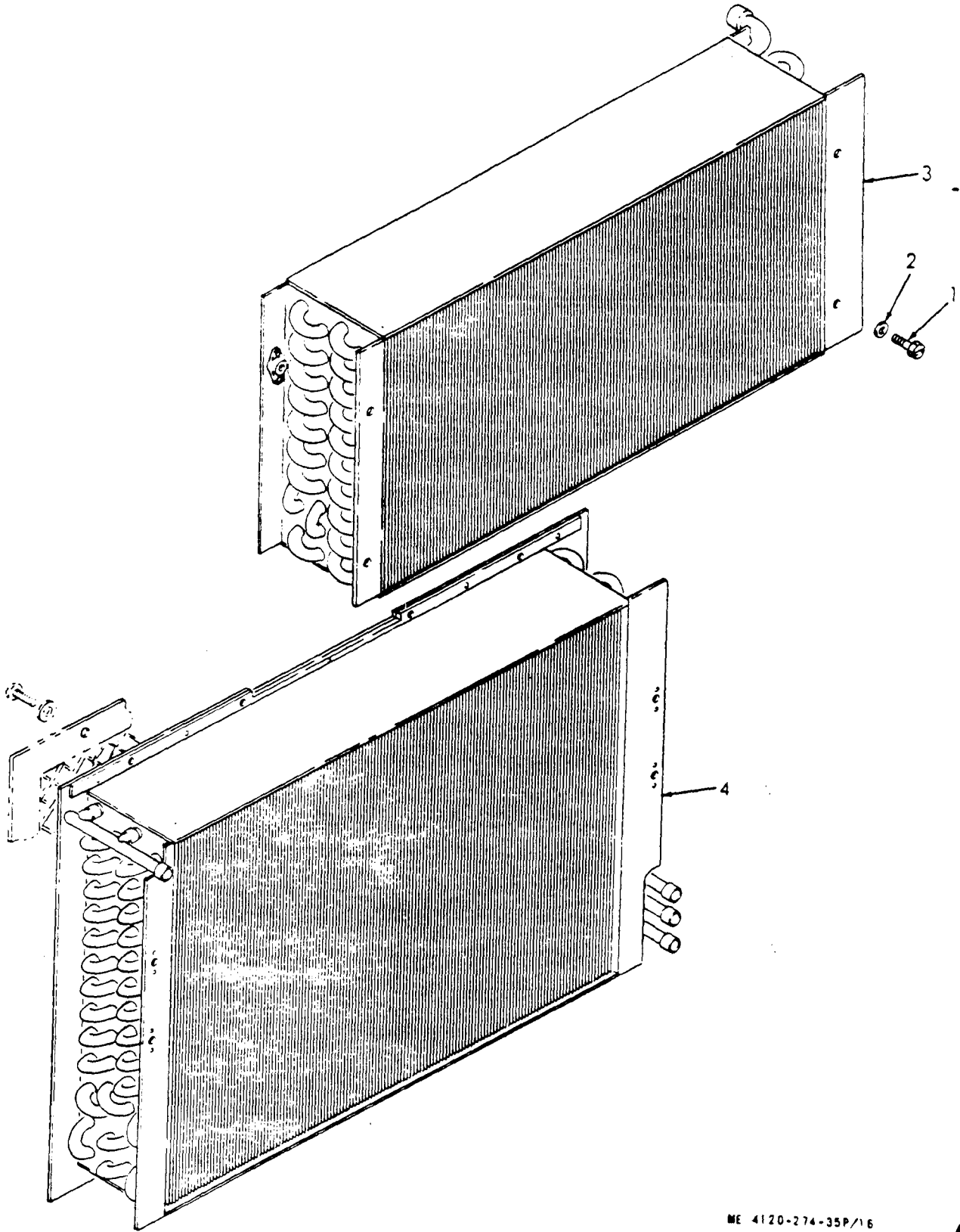
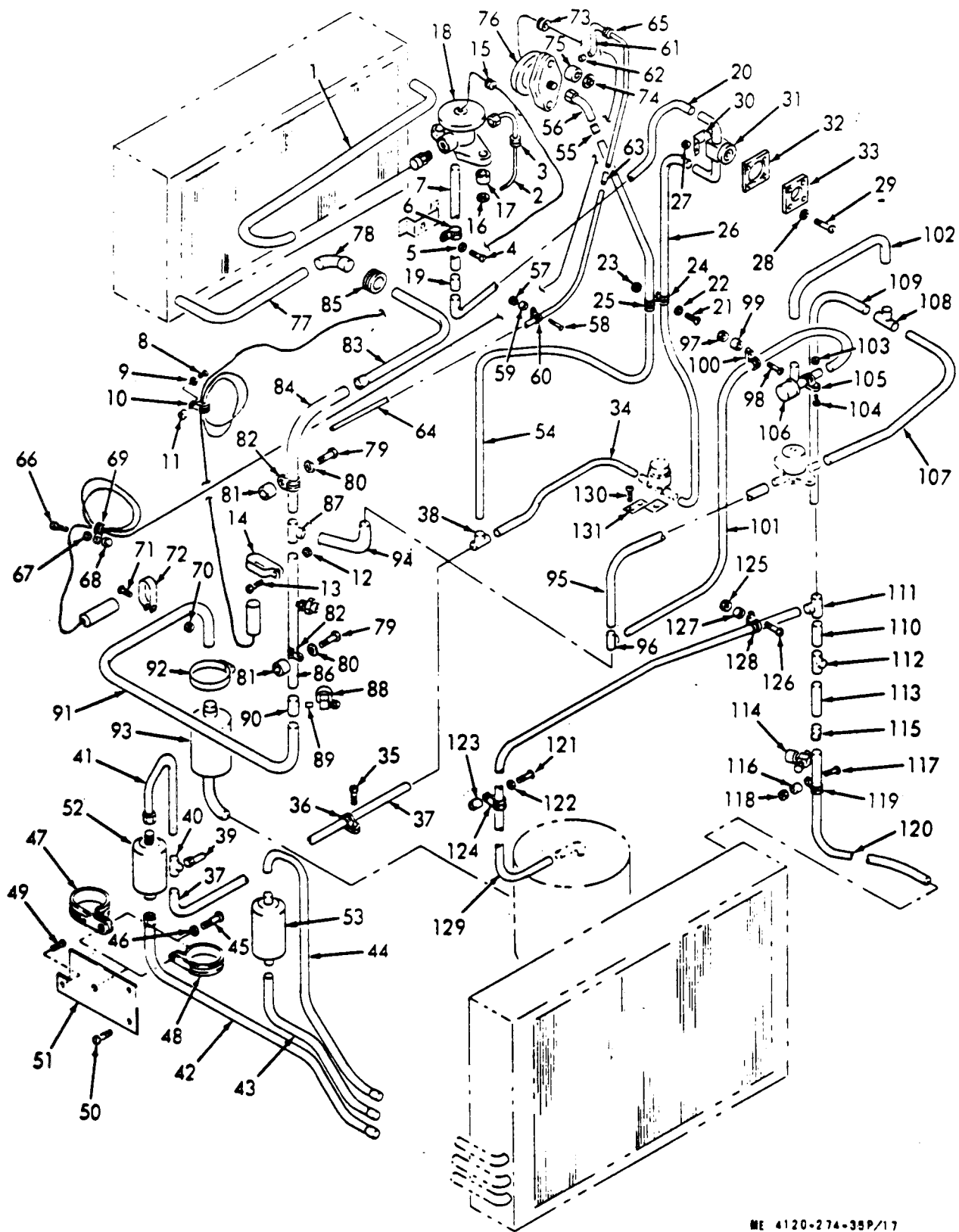


FIGURE 16. EVAPORATOR AND CONDENSER COILS AND MOUNTING



ME 4120-274-35P/17

FIGURE 17. REFRIGERANT PIPING

SECTION IV. INDEX-FEDERAL STOCK NUMBER AND REFERENCE NUMBER

CROSSREFERENCE TO FIGURE AND ITEM NUMBER					
STOCK NUMBER	FIG NO	ITEM NO	STOCK NUMBER	FIG NO	ITEM NO
3110-144-8755	4	13	4730-815-9295	13	17
3110-144-8755	4	14	4730-926-9649	17	112
4120-935-1611	1	24	4730-926-9649	17	115
4130-056-4593	5	15	4810-109-3830	12	3
4130-071-3940	17	52	4820-107-0992	17	76
4130-073-8404	17	31	4935-085-9004	1	10
4130-103-3732	1	9	5305-012-2138	3	7
4130-106-5148	5	7	5305-013-1830	4	16
4130-106-5647	14	1	5305-018-6929	4	7
4130-106-5649	10	9	5305-024-7217	6	6
4130-106-5652	6	25	5305-024-7217	6	14
4130-107-3221	10	4	5305-053-1112	1	27
4130-107-3729	10	9	5305-053-1114	GROUP 06	
4130-107-3731	6	25	5305-056-9945	GROUP 06	
4130-107-3731	9	36	5305-059-4552	9	15
4130-107-3735	1	13	5305-068-0505	1	49
4130-107-3743	14	10	5305-068-0505	17	49
4130-107-3744	14	10	5305-087-0259	5	13
4130-110-3477	15	7	5305-087-0259	16	1
4130-110-3776	14	19	5305-958-0340	1	7
4130-750-6654	15	7	5305-984-4992	7	1
4130-902-1482	16	4	5305-984-4992	9	18
4130-902-1497	15	7	5305-984-6191	12	1
4130-991-8260	GROUP 06		5305-984-6193	6	2
4132-106-5657	1	11	5305-984-6193	6	12
4540-110-9660	5	2	5305-984-6194	1	32
4540-112-0219	5	2	5305-984-6194	3	3
4730-079-0567	17	38	5305-984-6194	6	9
4730-143-8933	17	40	5305-984-6194	11	1
4730-203-4922	17	87	5305-984-6194	17	29
4730-208-4921	17	90	5305-984-6195	1	4
4730-264-9151	17	55	5305-984-6195	1	36
4730-264-9151	17	63	5305-984-6195	1	40
4730-815-9295	13	8	5305-984-6211	1	44

STOCK NUMBER	FIG NO	ITEM NO	STOCK NUMBER	FIG NO	ITEM NO
5305-985-6194	2	1	5310-060-2039	11	2
5305-989-7434	6	4	5310-061-7326	6	18
5305-989-7434	17	13	5310-081-8087	GROUP 06	
5305-989-7434	17	71	5310-081-8087	9	10
5305-989-7434	17	104	5310-081-8087	9	14
5305-989-7435	17	45	5310-081-8087	9	17
			5310-081-8087	9	26
5305-989-7435	17	50	5310-088-0551	9	34
5305-993-0190	9	35	5310-227-6566	4	3
5305-993-1851	6	23	5310-227-6566	4	6
5305-993-1851	9	21	5310-543-2628	4	5
5305-993-1851	17	4	5310-584-7800	6	22
5305-993-1851	17	8	5310-809-4058	1	50
5305-993-1851	17	35	5310-809-8544	2	3
5305-993-1851	17	58	5310-809-8544	3	5
5305-993-1851	17	66	5310-809-8544	17	28
5305-993-1851	17	98	5310-809-8546	16	2
5305-993-1851	17	117	5310-811-3494	17	27
5305-995-3441	17	79	5310-877-5797	17	12
5305-995-3441	17	121	5310-877-5797	17	57
5305-995-3442	14	6	5310-877-5797	17	70
5306-013-0696	4	1	5310-877-5797	17	97
5310-012-0214	4	2	5310-877-5797	17	103
5310-012-0214	17	16	5310-877-5797	17	116
5310-012-0219	17	74	5310-889-2549	6	1
5310-042-6903	6	21	5310-889-2549	6	8
5310-043-2226	14	7	5310-984-3806	15	1
5310-043-2226	17	5	5315-234-1856	13	4
			5315-234-1856	13	13
5310-043-2226	17	9	5315-730-4564	4	9
5310-043-2226	17	22	5315-730-4577	4	8
5310-043-2226	17	46	5325-286-6047	17	15
5310-043-2226	17	67	5325-286-6047	17	73
5310-045-3299	1	33	5325-619-6542	17	65
5310-045-3299	1	37	5325-727-0562	17	85
5310-045-3299	2	2	5340-205-6301	17	60
5310-045-3299	3	4	5340-531-9168	14	8
5310-045-3299	12	2	5340-543-4394	17	24
5310-060-2039	5	3	5340-543-4394	17	36
			5340-543-4394	17	69

STOCK NUMBER	FIG NO	ITEM NO	STOCK NUMBER	FIG NO	ITEM NO
5340-543-4394	17	119	5935-752-2793	14	2
5340-543-4394	17	128	5935-755-3493	14	13
5340-544-4394	17	100	5935-801-6623	14	3
5340-565-0004	17	105	5935-811-5856	14	23
5340-565-0011	17	11	5935-847-6124	14	11
5600-107-1147	6	13	5935-853-1913	14	3
5910-903-0665	11	5	5935-879-0022	14	20
5920-240-4066	9	16	5935-879-0235	14	2
5920-939-5442	9	13	5935-879-0235	14	11
5925-619-6542	17	3	5935-928-7865	14	14
5930-275-7800	7	3	5944-106-7100	8	3
5930-655-1514	6	17	5945-230-7726	9	25
5935-069-1306	9	30	5950-112-3438	9	27
5935-081-1233	14	23	5961-978-7660	8	4
5935-165-6183	10	20	6105-103-2167	4	10
5935-577-0091	1	47	6105-103-4515	4	10
5935-721-0488	14	5	6105-936-2130	4	10
5935-725-1345	10	15	6150-106-5655	10	24
5935-725-7248	10	10	6150-109-2550	10	19
5935-726-8317	10	10			

REFERENCE NO	MFG CODE	FIG NO	ITEM NO	REFERENCE NO	MFG CODE	FIG NO	ITEM NO
AA335-T62	06534	2	9	MS21044D08	96906	13	1
ADK-083	70255	17	52	MS21044D08	96906	13	10
B44535-101	06534	14	5	MS21044N04	96906	9	34
B44564-101	06534	7	2	MS21044N06	96906	GROUP 06	
				MS21044N06	96906	9	10
CS5787	92578	6	13	MS21044N06	96906	9	14
C1-13473	21394	9	27	MS21044N06	96906	9	17
C1-13474	95970	9	27	MS21044N06	96906	9	26
C1-14415	95970	9	27	MS21044N06	96906	10	1
C44518-1	06290	1	46	MS21044N06	96906	10	6
C44519-1	06534	1	43	MS21044N06	96906	10	11
C44530-101	06534	17	102	MS21044N06	96906	10	16
C44544-1	96906	3	8	MS21044N06	96906	10	21
C44546-101	06534	17	1	MS21044N08	96906	11	2
C44555-101	06534	1	1	MS21044N08	96906	17	27
C44556-101	96906	1	1	MS21044N3	96906	8	1
C44557-101	06534	1	1	MS21044N3	96906	8	1
C44558-101	06534	1	1	MS21044N3	96906	17	12
C44559-101	06534	17	61	MS21044N3	96906	17	57
C44561-101	06534	17	34	MS21044N3	96906	17	70
C6974-20-41	78553	GROUP 06		MS21044N3	96906	17	97
D44501-1	06534	16	3	MS21044N3	96906	17	103
D44508-101	06534	2	5	MS21044N3	96906	17	116
D44508-101	06534	3	1	MS21045-05	96906	6	11
D44526-1	06294	1	24	MS21045-08	96906	6	1
D44527-101	06534	1	25	MS21045-08	96906	6	8
D44529-101	06534	17	101	MS21045-3	96906	6	18
ERF212B1	58849	9	8	MS21049N06	96906	9	31
F09A250V2A	71400	9	9	MS21919-34	96906	17	48
HE-1015	96906	9	29	MS21919-42	96906	17	47
KAW5	96906	9	13	MS21919A6	96906	6	5
KBL37P126Q-1	93790	11	6	MS21919DG10	96906	17	105
KBL37P256Q	93790	11	5	MS21919DG2	96906	17	11
KBL37P306Q	93790	11	5				
KBL66P605Q	93790	11	6	MS21919DG4	96906	17	25
MS15795-708	96906	6	22	MS21919DG4	96906	17	60
MS20066-143	96906	4	9	MS21919DG6	96906	17	24
MS20066-147	96906	4	8	MS21919DG6	96906	17	36
MS20726-5	96906	1	49	MS21919DG6	96906	17	69
MS21004N3	96906	9	23	MS21919DG6	96906	17	100
MS21044-120	96906	9	20	MS21919DG6	96906	17	119
MS21044DE	96906	5	10	MS21919DG6	96906	17	124
MS21044D08	96906	5	3	MS21919DG6	96906	17	128

REFERENCE NO	MFG CODE	FIG NO	ITEM NO	REFERENCE NO	MFG CODE	FIG NO	ITEM NO
MS21919DG9	96906	14	8	MS3102R32-7P	96906	10	10
MS24596C48	96906	1	12	MS3106R12S3P	96906	14	16
MS24621-11	96906	GROUP 06		MS3106R12S3P	96906	14	18
MS24621-11	96906	10	12	MS3106R12S3PX	96906	14	20
MS24621-11	96906	10	17	MS3106R14S6S	96906	14	5
MS24621-11	96906	10	22	MS3106R16-10S	96906	10	5
MS24621-18	96906	1	30	MS3106R16-10S	96906	14	13
MS24621-18	96906	GROUP 06		MS3106R16S1SW	96906	14	13
MS24621-18	96906	10	2	MS3106R20-15S	96906	14	12
MS24621-30	96906	10	7	MS3106R28-12P	96906	14	2
MS24621-9	96906	1	27	MS3106R28-9P	96906	14	2
MS24621-9	96906	4	18	MS3106R28-9P	96906	14	11
MS24621-9	96906	6	24	MS3106R32-6S	96906	14	11
MS24665-155	96906	13	4	MS3106R32-7S	96906	14	2
MS24665-155	96906	13	13	MS35190-237	96906	9	11
MS25043-20C	96906	1	47	MS35190-237	96906	9	15
MS27183-10	96906	1	50	MS35202-219	96906	14	21
MS27183-7	96906	1	41	MS35202-263	96906	9	24
MS27183-7	96906	2	3	MS35206-214	96906	9	28
MS27183-7	96906	3	5	MS35206-214	96906	9	35
MS27183-7	96906	5	4	MS35206-229	96906	9	32
MS27183-7	96906	17	28	MS35206-231	96906	10	2
MS27183-8	96906	1	23	MS35206-231	96906	10	7
MS27183-8	96906	5	11	MS35206-232	96906	7	1
MS27183-8	96906	16	2	MS35206-232	96906	9	18
MS29183-9	96906	6	20	MS35206-243	96906	12	1
MS3100R16-10P	96906	14	23	MS35206-245	96906	6	2
MS3100R16S1P	96906	10	5	MS35206-245	96906	6	12
MS3100R16S1P	96906	14	23	MS35206-246	96906	1	15
MS3100R20-4P	96906	14	14	MS35206-246	96906	1	19
MS3100R20-4PX	96906	14	4	MS35206-246	96906	1	32
MS3100R20-4PY	96906	14	4	MS35206-246	96906	2	1
MS3100R28-11S	96906	14	3	MS35206-246	96906	3	3
MS3100R28-17S	96906	14	3	MS35206-246	96906	6	9
MS3102P28-9S	96906	10	5	MS35206-246	96906	11	1
MS3102R12S	96906	10	15	MS35206-246		11	3
MS3102R12S3S	96906	10	15	MS35206-246	96906	13	2
MS3102R12S3SX	96906	10	20	MS35206-246	96906	13	11
MS3102R12S3SZ	96906	10	25	MS35206-246	96906	17	29
MS3102R28-12S	96906	10	10	MS35206-247	96906	1	4
MS3102R32-6P	96906	10	5				

REFERENCE NO	MFG CODE	FIG NO	ITEM NO	REFERENCE NO	MFG CODE	FIG NO	ITEM NO
MS35206-247	96906	1	36	MS35338-42	96906	3	4
MS35206-247	96906	1	40	MS35338-42	96906	12	2
MS35206-264	96906	1	44	MS35338-43	96906	6	19
MS35207-247	96906	1	7	MS35490-1	96906	17	15
MS35207-263	96906	6	4	MS35490-1	96906	17	73
MS35207-263	96906	8	2	MS35490-14	96906	17	85
MS35207-263	96906	8	2	MS35490-6	96906	17	3
MS35207-263	96906	17	13	MS35490-6	96906	17	65
MS35207-263	96906	17	71	MS35650-102	96906	6	21
MS35207-263	96906	17	104	MS35824-3	96906	17	92
MS35207-264	96906	5	12	MS35842-2	96906	13	3
MS35207-264	96906	17	45	MS35842-2	96906	13	8
MS35207-264	96906	17	50	MS35842-2	96906	13	12
MS35207-267	96906	6	23	MS35842-2	96906	13	17
MS35207-267	96906	9	21	MS35922-4-3	96906	17	78
MS35207-267	96906	17	4				
MS35207-267	96906	17	8	MS35927-2	96906	17	55
MS35207-267	96906	17	21	MS35927-2	96906	17	63
MS35207-267	96906	17	35	MS35927-3	96906	17	19
MS35207-267	96906	17	21	MS35927-2	96906	17	63
MS35207-267	96906	17	35	MS35927-3	96906	17	19
MS35207-267	96906	17	58	MS39929-3	96906	17	96
MS35207-267	96906	17	66	MS35929-3	96906	17	111
MS35207-267	96906	17	98	MS51007-10	96906	10	3
MS35207-267	96906	17	117	MS51007-10	96906	10	8
MS35207-268	96906	14	6	MS51007-12	96906	10	3
MS35207-269	96906	17	79	MS51007-12	96906	10	8
MS35207-269	96906	17	121	MS51007-3	96906	10	13
MS35291-61	96906	3	7	MS51007-3	96906	10	18
MS35338-24	96906	14	7	MS51007-3	96906	10	23
MS35338-24	96906	17	5	MS51021-62	96906	2	6
MS35338-24	96906	17	9	MS51021-62	96906	3	2
MS35338-24	96906	17	22	MS51922-9	96906	15	1
MS35338-24	96906	17	46	MS90726-5	96906	17	49
MS35338-24	96906	17	67	MS9122-05	96906	5	13
MS35338-24	96906	17	80	MS9122-05	96906	16	1
MS35338-24	96906	17	122	MS9122-07	96906	1	22
MS35338-26	96906	17	16	MTS-004	04009	8	3
MS35338-26	96906	17	74	MTS-004	96906	8	3
MS35338-42	96906	1	33	MTS-004-9	04009	8	3
MS35338-42	96906	1	37	RB-700	86797	6	15
MS35338-42	96906	2	2	R8175	86797	6	7

REFERENCE NO	MFG CODE	FIG NO	ITEM NO	REFERENCE NO	MFG CODE	FIG NO	ITEM NO
SA-K13	78462	17	31	13211E8337	97403	9	5
TCL100HW120	70255	17	18	13211E8376-1	97403	14	9
TCL25CL	70255	17	76	13211E8376-1	97403	17	10
TP019303	21394	9	27	13211E8376-1	97403	17	59
WHP422H9-208-3	01479	15	7	13211E8376-1	97403	17	68
WHP622H9-1-115	01479	15	7	13211E8376-1	97403	17	99
WHP622H9-208-3	01479	15	7	13211E8376-1	97403	17	118
WHP622H9-230-1	01479	15	7	13211E8376-1	97403	17	127
X5387	82866	1	13	13211E8376-2	97403	17	81
01-005248-084	64731	4	13	13211E8376-3	97403	17	17
01-005248-084	64731	4	14	13211E8376-3	97403	17	23
01-008773-020	64731	4	20	13211E8376-3	97403	17	75
0158	93781	12	3	13211E8399		6	26
02-0009685-010	64731	4	19	13211E8399C28-11P	97403	6	26
02-009350-000	64731	4	12	13211E8399C28-17P	97403	6	26
02-009685-010	64731	4	17	13211E8411	97403	13	6
02-010540-002	64731	4	15	13211E8411	97403	13	15
02-010541-001	64731	4	21	13211E8412	97403	13	5
02-010541-002	64731	4	15	13211E8412	97403	13	14
02-010542-002	64731	4	15	13211E8416	96906	7	5
1N1695	09214	8	4	13214E3359	97403	6	10
104A-70034-105	91494	17	106	13214E3364-2	97403	17	110
13-P	06534	1	10	13214E3364-2	97403	17	113
13211E3178	97403	1	48	13214E3369-2	97403	17	86
13211E3416	97403	5	1	13214E3372-2	96906	17	123
13211E3799-1	97403	17	62	13214E3379	97403	6	27
13211E4043-11	97403	17	87	13214E3384	97403	1	21
13211E4043-29	97403	17	90	13214E3386	97403	1	51
13211E4043-6	97403	17	38	13214E3407	97403	2	8
13211E4043-6	97403	17	108				
13211E8166	97403	15	6	13214E3408	97403	2	7
13211E8170	97403	15	4	13214E3411-1	97403	17	112
13211E8180	96906	5	6	13214E3411-1	97403	17	115
13211E8180	96906	5	8	13214E3411-3	97403	17	40
13211E8222	97403	1	52	13214E3412	97403	9	7
13211E8242	97403	17	33	13214E3419	97403	17	30
13211E8273	96906	5	9	13214E3448	96906	1	25
13211E8322	97403	1	11	13214E3453	97403	14	1
13211E8323	97403	13	9	13214E3457-1	97403	14	22
13211E8323	97403	13	18	13214E3457-2	97403	14	22
13211E8337	96906	5	5	13214E3460	97403	1	16

REFERENCE NO	MFG CODE	FIG NO	ITEM NO	REFERENCE NO	MFG CODE	FIG NO	ITEM NO
13214E3461	97403	10	9	13214E3615	97403	1	39
13214E3462	97403	6	25	13214E3616	97403	1	35
13214E3469	97403	1	5	13214E3623	97403	3	6
13214E3469	97403	1	8	13214E3624	97403	17	120
13214E3469	97403	1	20	13214E3625	97403	4	22
13214E3469	97403	1	34	13214E3629-1	97403	5	14
13214E3469	97403	1	38	13214E3635	97403	1	53
13214E3469	97403	1	42	13214E3636	97403	1	14
13214E3469	97403	1	45	13214E3640	97403	1	9
13214E3471-1	97403	1	28	13214E3647	96906	1	18
13214E3471-1	96906	GROUP 06		13214E3659	97403	15	3
13214E3471-2	97403	1	31	13214E3662	97403	1	3
13214E3471-2	97403	GROUP 06		13214E3664	97403	9	39
13214E3476-2	97403	15	2	13214E3665	97403	GROUP 06	
13214E3476-2	97403	15	5	13214E3667	97403	17	26
13214E3484	97403	13	7	13214E3668	97403	17	54
13214E3486	97403	13	16	13214E3672	97403	17	109
13214E3497-2	97403	9	3	13214E3674	97403	17	83
13214E3498-2	97403	9	3	13214E3676	97403	17	64
13214E3498-3	97403	9	3	13214E3677	97403	17	94
13214E3506	97403	5	7	13214E3679	97403	17	56
13214E3507-1	97403	9	37	13214E3681	97403	17	107
13214E3507-2	97403	9	37	13214E3684	97403	17	84
13214E3511	97403	6	25	13214E3687	97403	17	91
13214E3516-1	97403	14	19	13214E3688	97403	17	129
13214E3516-2	97403	14	19	13214E3689	97403	GROUP 06	
13214E3516-3	97403	14	19	13214E3691	97403	17	20
13214E3523-3	97403	9	6	13214E3696	97403	17	12
13214E3527	97403	11	7	13214E3698-1	97403	5	2
13214E3531	97403	11	4	13214E3698-2	97403	5	2
13214E3558	97403	2	10	13214E3703	97403	1	17
13214E3569-1	97403	9	36	13214E3705	97403	9	3
13214E3569-2	97403	9	36	13214E3708	97403	16	4
13214E3569-3	97403	9	36	13214E3712	97403	1	6
13214E3578	97403	7	6	13214E3713	97403	1	9
13214E3579	97403	14	1	13214E3723	97403	14	10
13214E3587	97403	14	22	13214E3724	97403	10	4
13214E3588	97403	10	9	13214E3725-2	97403	6	3
13214E3594	97403	1	25	13214E3725-3	97403	6	3
13214E3611	97403	17	37				

REFERENCE NO	MFG CODE	FIG NO	ITEM NO	REFERENCE NO	MFG CODE	FIG NO	ITEM NO
13214E3731	97403	17	51	13214E3813	97403	17	77
13214E3732	97403	17	44	13214E3817	97403	17	2
13214E3743	97403	17	14	13214E3819	97403	17	43
13214E3743	97403	17	72	13214E8216	97403	1	2
13214E3744V1	97403	9	4	13214E8412	97403	13	5
13214E3748	97403	1	25	1400-S460	02289	9	38
13214E3754	97403	14	15	1400-S461	02289	9	38
13214E3754	97403	14	17	1715	06534	9	33
13214E3761-2	97403	1	24	20744-017-495	96906	5	15
13214E3761-3	97403	1	24	210AP10AN	92578	7	4
13214E3761-4	97403	1	24	210AP40AN	92578	7	3
13214E3768	97403	10	9	3MP-23	93781	12	5
13214E3769	97403	6	25	3001X3-540	58553	17	39
13214E3771-2	97403	10	19	39TB8	75382	9	22
13214E3771-3	97403	10	24	4515	71400	9	16
13214E3771-4	97403	10	14	4525	71400	9	12
13214E3771-5	97403	10	19	45532-101	06534	17	88
13214E3771-6	97403	10	24	45532-102	06534	17	114
13214E3771-7	97403	10	14	4720-16	64731	4	10
13214E3771-8	97403	10	19	4720-17	64731	4	10
13214E3771-9	97403	10	24	4730-18	64731	4	10
13214E3774	97403	14	10	4730-9	64731	4	10
13214E3781	97403	14	1	511TS1-2	91929	6	17
13214E3782	97403	10	4	699JJ6F	75382	9	19
13214E3792	97403	2	4	70-197-2MG6	74193	9	30
13214E3797	97403	17	93	70-197-3MG6	74193	9	30
13214E3798	97403	17	53	71-161-3MG6	74193	9	30
13214E3801	97403	17	41	71-168-2MG6	74193	9	30
13214E3803	97403	17	95	8912K216	17465	6	16
13214E3806	97403	14	10	9565H10	15605	9	25
13214E3807	97403	10	4				

By Order of the Secretary of the Army:

Official:

KENNETH G. WICKHAM,
*Major General, United States Army,
The Adjutant General.*

W. C. WESTMORELAND,
*General, United States Army,
Chief of Staff.*

Distribution:

To be distributed in accordance with DA Form 12-25, Sec III (qty rqr Block #535), Direct and General Support requirements for Air Conditioners: 9000 BTU.

☆ U.S. GOVERNMENT PRINTING OFFICE : 1995 O - 164-551

